

Camp Evers 2105 Crossarm Investigation, Summary

Distribution Contact: [REDACTED]	
Date Identified: 06/16/21 Index #: 816	Failure Impacts EC #: 121550513 OIS#: 1375662 Pole SAP#: 101676591
Background (Copied from Ignition Tracker) On June 16th, 2021 at 18:05 hrs. a PG&E Trouble man was dispatched to the Camp Evers 2105 21 KV Distribution circuit near Clement Street in the community of Ben Lomond in Santa Cruz County in response to a report of a broken, partially hanging crossarm and a possible vegetation fire. Upon his arrival in the area, the trouble man noted a decayed, broken secondary crossarm and what he described as an approximate 0.25 acre grass fire below the base of the pole. This incident occurred in a Tier 3 HFTD during a clear and calm weather condition. CAL Fire responded to and extinguished the fire at the base of the pole. Circuit: CAMP EVERS 2105 City: BEN LOMOND Division: CENTRAL COAST	<u>Safety</u> : Ignition event is a public safety event. <u>Customer</u> : 6 customer out of power.
Preliminary Failure Mode Crossarm failed due to crack propagating creating a split in the crossarm, leading to the insulator detachment. Crossarm exhibited rot on top (yellow arrows on next slide). High temperature damage possibly due to arcing between two connectors was observed, see connector photos next slide (green arrows on next slide).	
Planned for coming weeks <ul style="list-style-type: none">• Crossarm sent to ATS: received 07/07/2021 (Photos next slide), ATS21-0217• Testing Plan<ul style="list-style-type: none">• Conduct an initial visual examination to document the crossarm. - Complete• Identify any degradation mechanisms and or damage within the crossarm.	

Camp Evers 2105 Crossarm Investigation, Summary

EQUIPMENT INFO

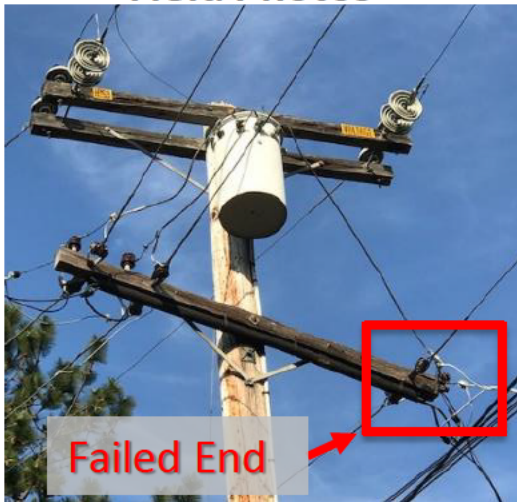
Secondary Crossarm

Year installed: 1956

Lat: 37.07743

Long: -122.07866

Field Photos



As-Received Photos

