



ELECTRIC RATE PLAN

The nation's first vehicle-to-grid export rate will be available for your school soon

PG&E's vehicle-to-grid export provides upfront incentives to help commercial customers and schools offset fleet costs and delivers an innovative solution to export power back to the grid during peak energy demand periods.

[Learn more »](#)



ENERGY EFFICIENCY

Get support from experts for your next energy project

Save money and time, meet state energy mandates, and reduce maintenance costs with **K-12 Schools Energy Efficiency Program** offered by Willdan, an authorized implementor of PG&E energy-saving programs.

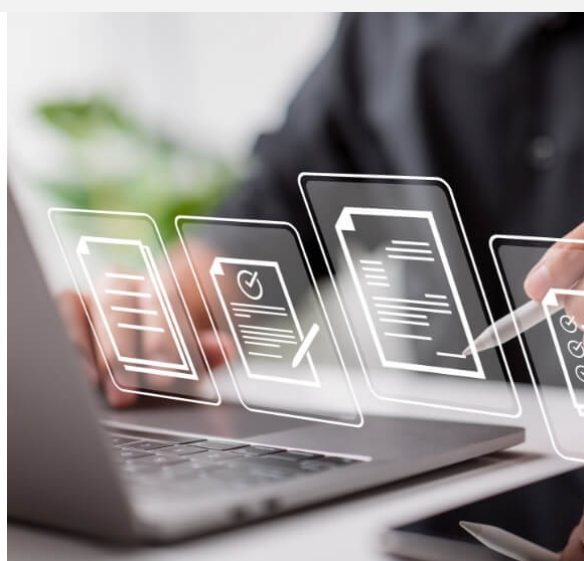
[Request your audit »](#)

SERVICE PLANNING

Tips to get your service request processed smoothly

PG&E's **Nicholas Domich** and **Jennifer Betancourt** provide tips to consider when submitting your electric or gas service request.

[Stay in the know »](#)



Save money by choosing the best rate plan for your operations

Ensuring your school is on the best rate plan can help you save money. Log in to your online account and choose the option that works best for your operations.

[Compare and save »](#)

ELECTRIFICATION

Reduce energy bills with electric heat pump technology

In this webinar, experts share how heat pumps and other forms of electric heating can displace long-time carbon sources and impact your bottom line.

[Listen now »](#)



RESILIENCY

Potential funding sources for schools

Courtesy of the **Resilient Schools Collaborative**, learn about third party resources for K-12 schools to focus on energy resiliency, storage and assessment tools.

[Download now »](#)

Business Resources



We're dedicated to supporting your energy needs

Let our dedicated **Energy Advisors** walk you through our energy- and money-saving programs while helping you improve your school's operations.

[SCHEDULE A MEETING »](#)

