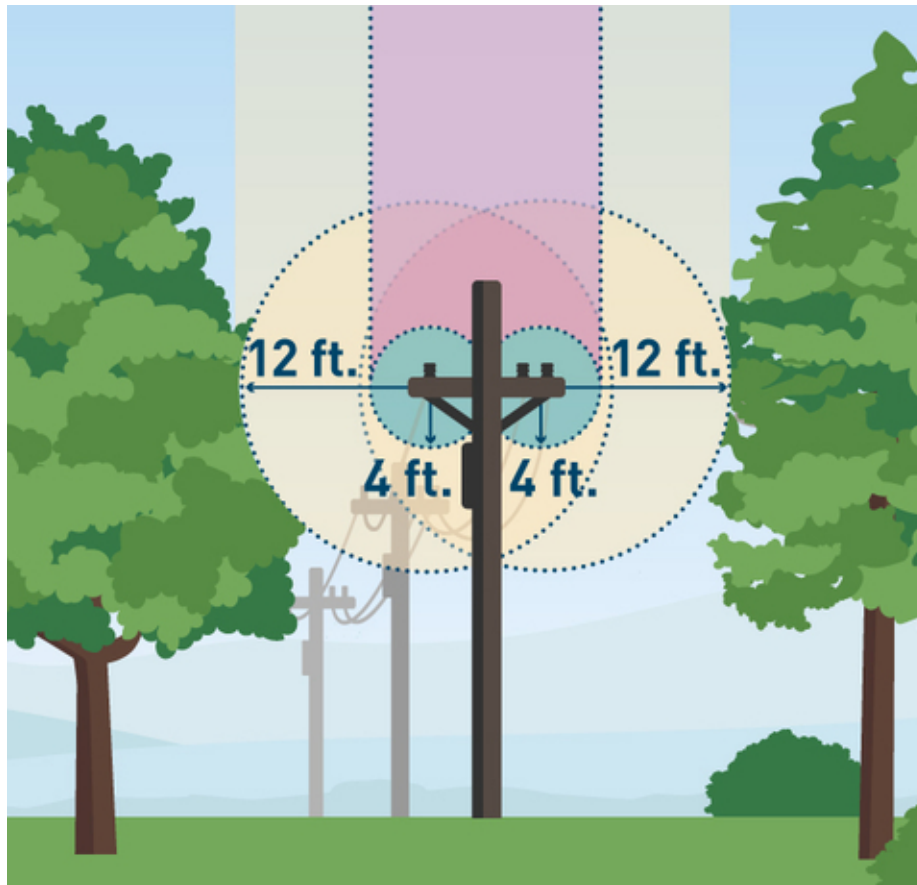


# Vegetation Management Distribution Inspection Procedure

## Attachment 2, EVM WMP Commitments

The EVM Program concluded at the end of 2022. Routine VM patrols now maintain the enhanced clearances achieved in EVM. PG&E has established routine maintenance requirements for electric distribution circuits where EVM scope clearances have been performed (in HFTD designated areas) and passed by work verification.

All electric distribution circuits where the EVM scope clearances have been previously achieved must be prescribed for no less than 12 feet (ft.) of clearance. All overhanging vegetation that will encroach the 4-ft overhang plane before the next annual inspection cycle must be prescribed to remove all overhangs.



### REVISION NOTES

Where?	What Changed?
NA	Original publication.