



Pacific Gas and Electric Company Former Napa Manufactured Gas Plant Elm Street and Riverside Drive, Napa September 2024

Remediation Completed

Pacific Gas and Electric Company (PG&E) would like to thank you for your patience and consideration as we conducted important environmental cleanup work. On August 23rd, 2024, PG&E completed a 11-month voluntary remediation (cleanup) project to address soil and groundwater impacted by a former manufactured gas plant (MGP) that operated from 1889 to 1924 at the corner of Elm Street and Riverside Drive in Napa (site). This work is overseen by the California Department of Toxic Substances Control (DTSC). Cleanup work included excavating impacted soil, transporting the soil off-site to permitted disposal facilities, on-site treatment of deeper soils, backfilling excavations with clean, imported fill and site restoration. The cleanup work was conducted to provide long-term protection of public health, the environment and support future site redevelopment.



Soil was excavated inside of a tent to control dust and odors.



Large drill rigs were used to treat deeper soils on-site.



Excavated soil was loaded onto trucks for off-hauling to a licensed disposal facility.



A compactor smoothed out clean soil used to backfill excavation areas.



Pacific Gas and Electric Company
Former Napa Manufactured Gas Plant
 Elm Street and Riverside Drive, Napa
 September 2024



A view of the site after remediation work has been completed.

Post-Remediation Monitoring and Reporting

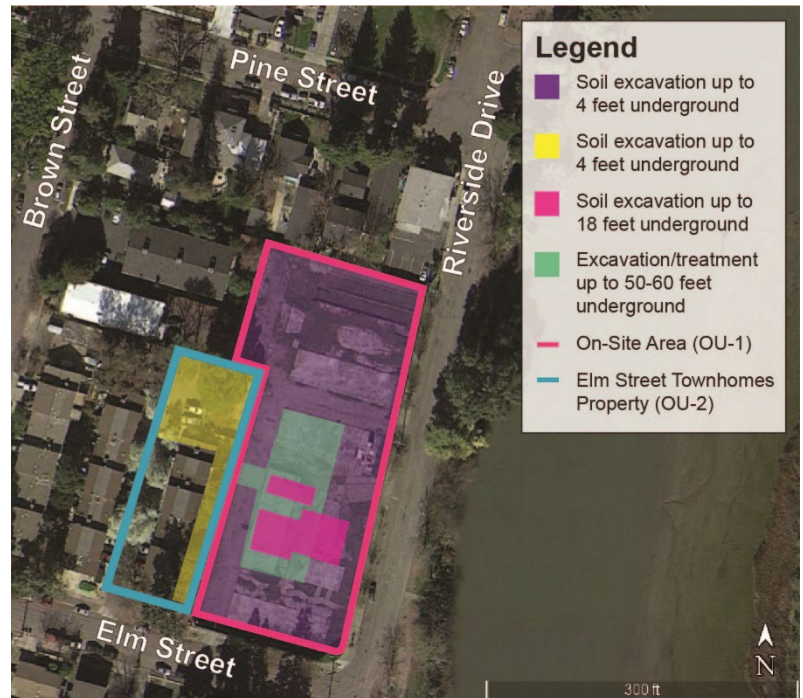
With cleanup work now complete, PG&E will prepare and submit to DTSC a Remedial Action Completion Report, which details the work conducted. As required in the DTSC-approved cleanup plan, post remediation soil vapor (air in between soil particles) sampling will occur in 2025 to confirm the effectiveness of remediation work. In addition, post remediation groundwater monitoring will begin in 2025 and occur for a minimum of five years. Prior to conducting this sampling, we will notify nearby neighbors. We do not anticipate this work will impact our neighbors, but you may hear some minor noise when crews use small drill rigs at sampling locations.

Property Reuse

PG&E is focused on working with DTSC to complete the post-remediation and site closure process. We anticipate this will take roughly two years. After DTSC certifies that all environmental work is complete, PG&E will entertain redevelopment proposals.

For More Information

We welcome your input. For more information or to be added to our email distribution list, please contact the toll-free PG&E hotline at (866) 247-0581 or remediation@pge.com.



A figure showing the site and areas where remediation was completed.