



Former Vallejo Manufactured Gas Plant Curtola Parkway and Sonoma Boulevard, Vallejo

Environmental Project Update
September 2024

Project Overview

In December 2023, Pacific Gas and Electric Company (PG&E) completed its multi-year remediation (cleanup) project to address environmental impacts at the former Vallejo Manufactured Gas Plant (MGP), a 26-acre City of Vallejo-owned property at the corner of Curtola Parkway and Sonoma Boulevard where a gas plant operated from 1872 to 1930. Cleanup work included safely excavating and hauling approximately 170,000 cubic yards of contaminated soil, treating deeper contaminated soil in-place by mixing it with a cement-like mixture that prevents impacts from migrating, and backfilling excavated and treated areas with clean imported soil to restore the site to its original grade. This work was conducted under the oversight of the California Department of Toxic Substances Control (DTSC).

This fall, PG&E will return to the site to restore the boat launch parking lot and conduct post-remediation sampling. Boat launch Parking Lot restoration work will be conducted in accordance with permits from the San Francisco Bay Conservation and Development Commission (BCDC) and the City of Vallejo. Post-remediation sampling will be conducted under DTSC oversight. This work supports preparing the site for future redevelopment by the City of Vallejo.



View of the Site after remediation and restoration.

Boat Launch Parking Lot Restoration Work – Mid-September 2024 - Summer 2025

Restoration of the boat launch area will begin the week of September 16, or as soon as all permits are issued, and last roughly ten to twelve months. Work will occur Monday through Friday from 7:00 a.m. to 5:00 p.m., with occasional Saturday work when necessary. Work includes:

- Backfilling, grading, and paving a new parking lot
- Installing new lighting and a new restroom
- Installing electrical vehicle charging stations
- Installing new fencing and landscaping

All work will occur in the boat launch parking lot area (see Figure 1) with some staging of equipment and supplies inside the larger enclosed City-owned property at the end of Mono Street. Community members

can expect to see a field crew of 10-30 individuals working with heavy construction equipment including excavators, large pavers and large trucks. You may experience some noise and truck traffic during this work.

PG&E is committed to the safety of the community and all work will be conducted in accordance with a site-specific Health and Safety Plan that includes measures to minimize any potential construction impacts. Best management practices will be in place to control dust and real-time air monitoring will be performed during the work to protect the surrounding community. Traffic control measures like flaggers and signage will be used for vehicle and pedestrian safety when trucks are entering and exiting the boat launch parking lot.

The boat launch parking lot will remain closed during the construction.

Post-Remediation Monitoring – September 2024 - 2025

As required in the DTSC-approved cleanup plan, PG&E will conduct post-remediation soil gas (air between grains of soil) and groundwater sampling to confirm the effectiveness of cleanup work. Soil gas sampling work will begin on September 9 and take up to eight weeks (see Figure 2). Work includes installing 24 soil gas probes on-site and five probes at the 1225 Sonoma Boulevard property, collecting samples, and analyzing them. PG&E will return in 2025 to install groundwater monitoring wells, collect samples, and analyze them.

We do not anticipate this work will impact our neighbors, but you may hear some minor noise while crews use small drill rigs at sampling locations. PG&E and DTSC will notify the community before sampling work begins.

Property Reuse

PG&E is focused on working with DTSC to complete the post-remediation and site closure process. We anticipate this will take a minimum of two years. After DTSC certifies that all environmental work is complete, PG&E will return the property to the City of Vallejo, which will then make any decisions regarding redevelopment. PG&E is not involved in the City's redevelopment plans and we encourage you to contact the City directly for more information regarding future development of the property.

For More Information

We welcome your input. For more information, please contact the toll-free PG&E Environmental Remediation Response Line at (866) 247-0581 or remediation@pge.com. You can also visit the project website at: www.pge.com/vallejo-mgp.

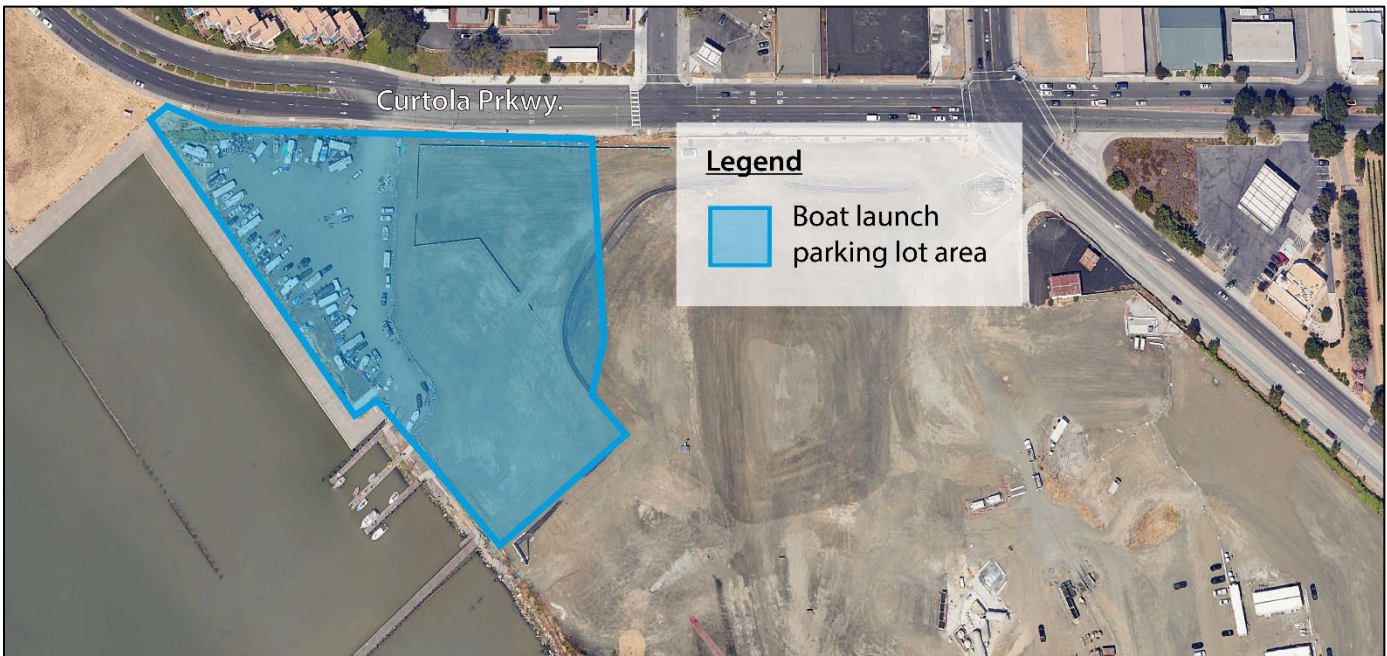


Figure 1 – A map showing the boat launch parking lot restoration area.



Figure 2 – A map showing the soil gas sampling locations.