



Property for Sale

240 Coalinga Plaza, Coalinga



Property Details

±7,013 square foot lot improved with an office building and paved parking lot

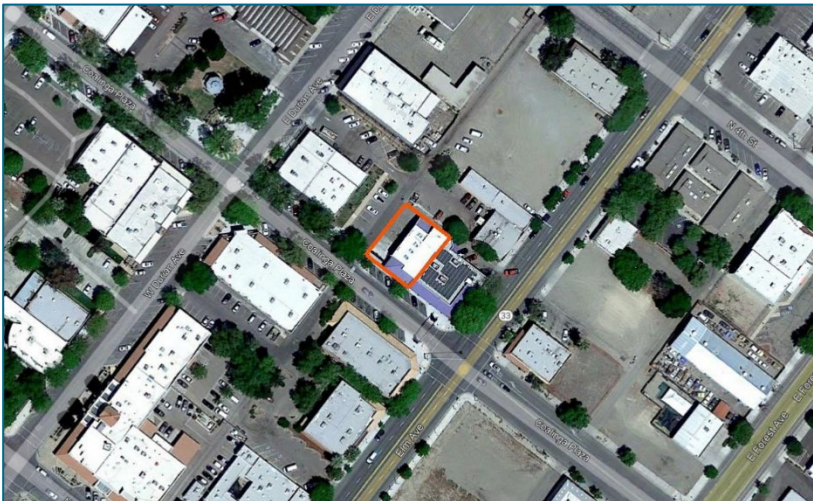
Location: Downtown Coalinga

Fresno County

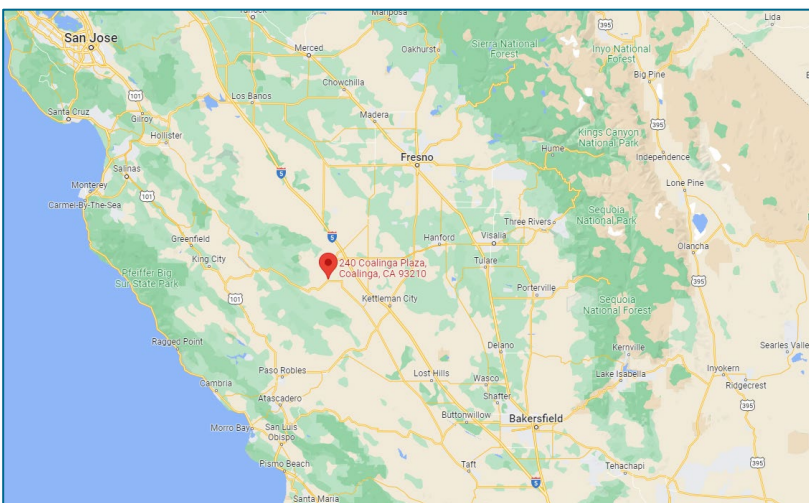
APN: 072-131-14U

Zoning: CG General Commercial

General Plan Designation: CG General Commercial



Description: In the heart of the downtown commercial district near multiple retail stores, restaurants, offices, a park, and residences. The two-story building has ±6,493 gross square feet/± 6,109 rentable square feet and parking in front of the building and in the shared adjacent parking lot. The property is half a block to East Elm Avenue and State Routes 33 and 198.



Broker Contact:

Jeremy Reed

jreed@thearcp.com

(559) 705-2120

[View on Google Maps](#)

Image Source: Google

Contact PG&E at landsales@pge.com

The above information, while not guaranteed, has been secured from sources we believe to be reliable. It may be subject to error, change, or withdrawal. Interested parties should contact PG&E to verify details about the property.

Updated January 3, 2024