



Property for Sale

152 N K Street, Dinuba



Property Details

±0.258-acre, flat lot improved with an office building and paved parking lot

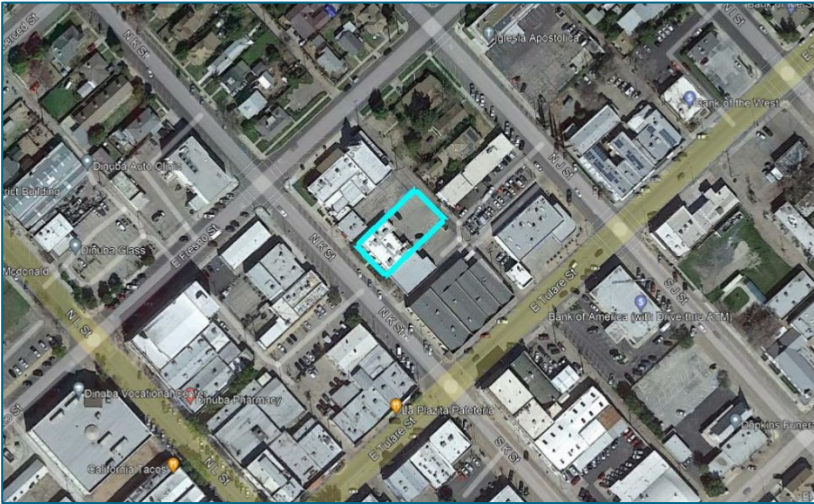
Location: Downtown Dinuba

Tulare County

APN: 072-131-14U

Zoning: C-2 Downtown Commercial

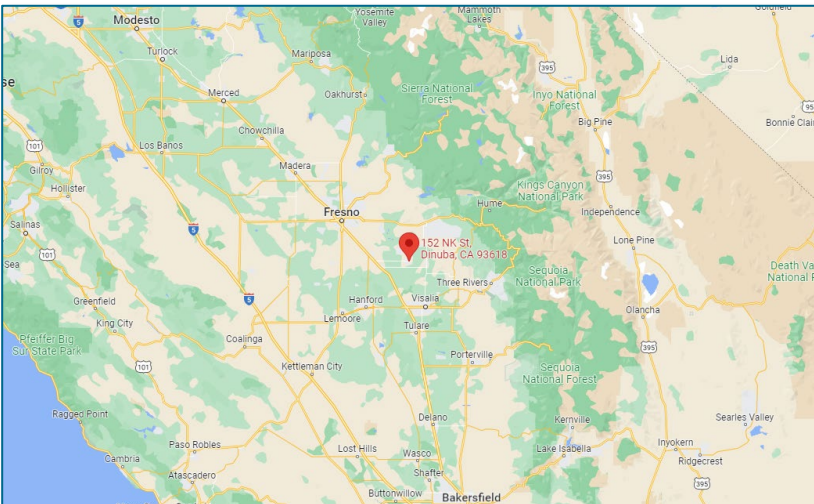
General Plan Designation: Commercial – Central District



Description: In the downtown commercial district. It is located near professional offices, restaurants, shops, and residences and is near public transit. The single-story building is ±4,122 gross square feet/±3,942 rentable square feet and the property includes a rear parking lot with 14 spaces.

Environmental: No known environmental issues.

PG&E Facilities: An overhead electric line at rear edge of property will require an easement.



Broker Contact:

Jeremy Reed

jreed@thearcp.com

(559) 705-2120

[View on Google Maps](#)

Image Source: Google

Contact PG&E at landsales@pge.com

The above information, while not guaranteed, has been secured from sources we believe to be reliable. It may be subject to error, change, or withdrawal. Interested parties should contact PG&E to verify details about the property.

Updated January 3, 2024