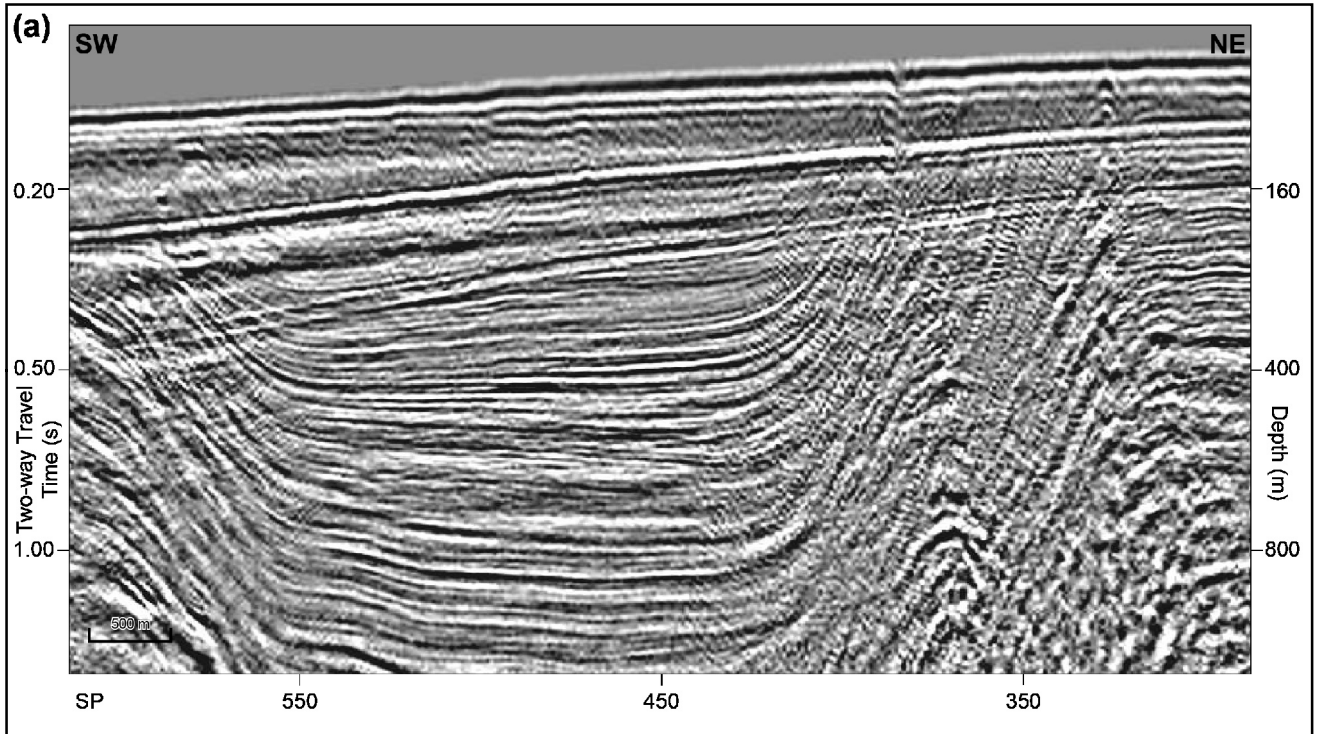


# **APPENDIX A**

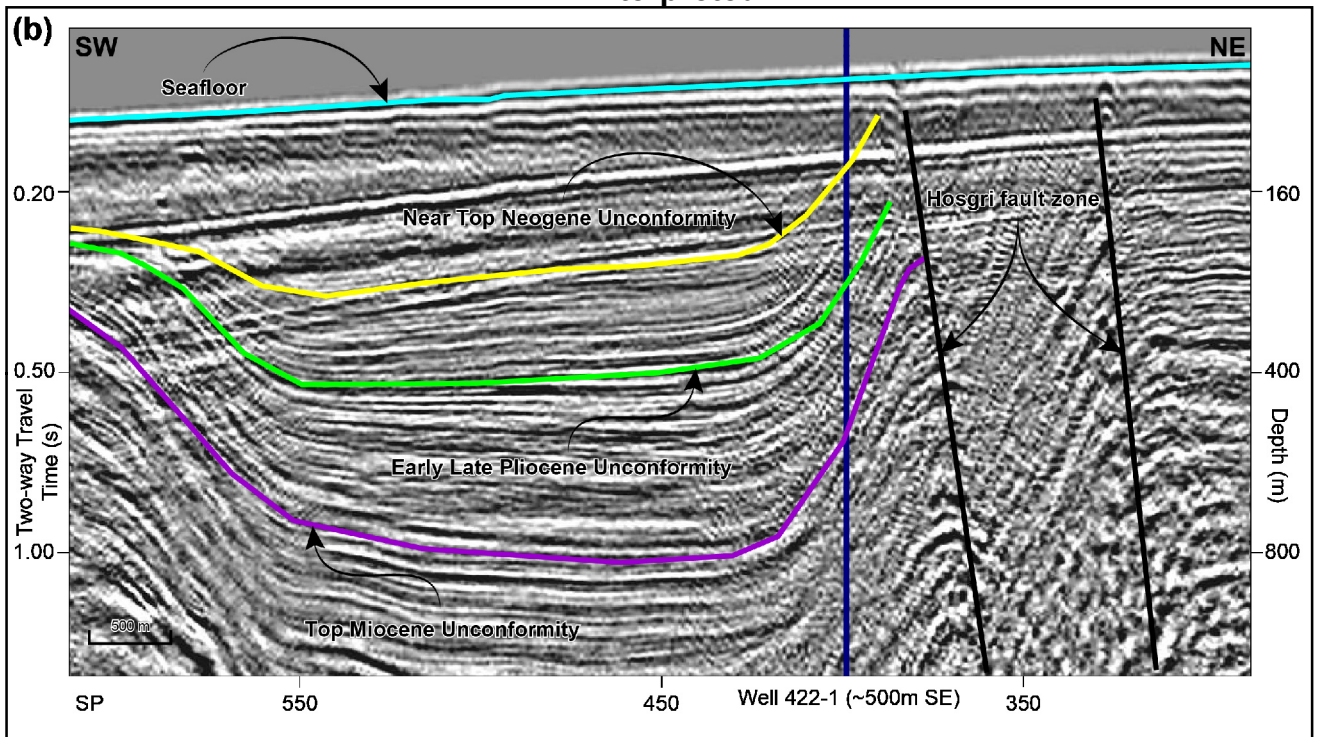
## **SUPPLEMENTAL FIGURES**

File Path: N:\Projects\04\_2013\04\_7922\_4500\_PGESeismicData\Interpretation\Outputs\2014\_04\_20\_LESSStudiesRev3\mxd\Figure\_A-1\_GSILine\_1985\_201.mxd; Date: 07/27/2014; User: Bryan Bergkamp; Figure: Rev. 3

### Uninterpreted



### Interpreted



#### EXPLANATION

- Seafloor
- Hosgri Fault
- Near Top Neogene Unconformity
- Early Late Pliocene Unconformity
- Top Miocene Unconformity



**1980 GSI Line 201,  
Offshore Point Sal**

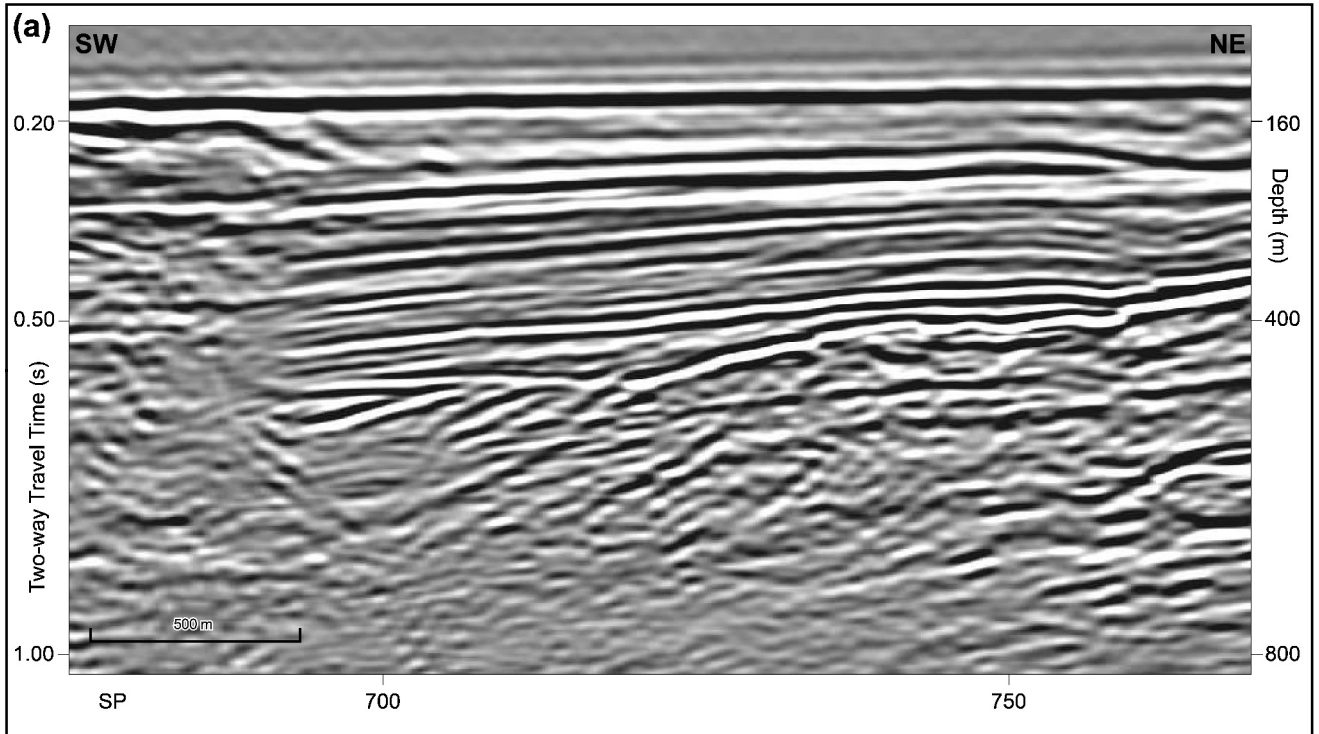
**OFFSHORE LESS STUDIES**



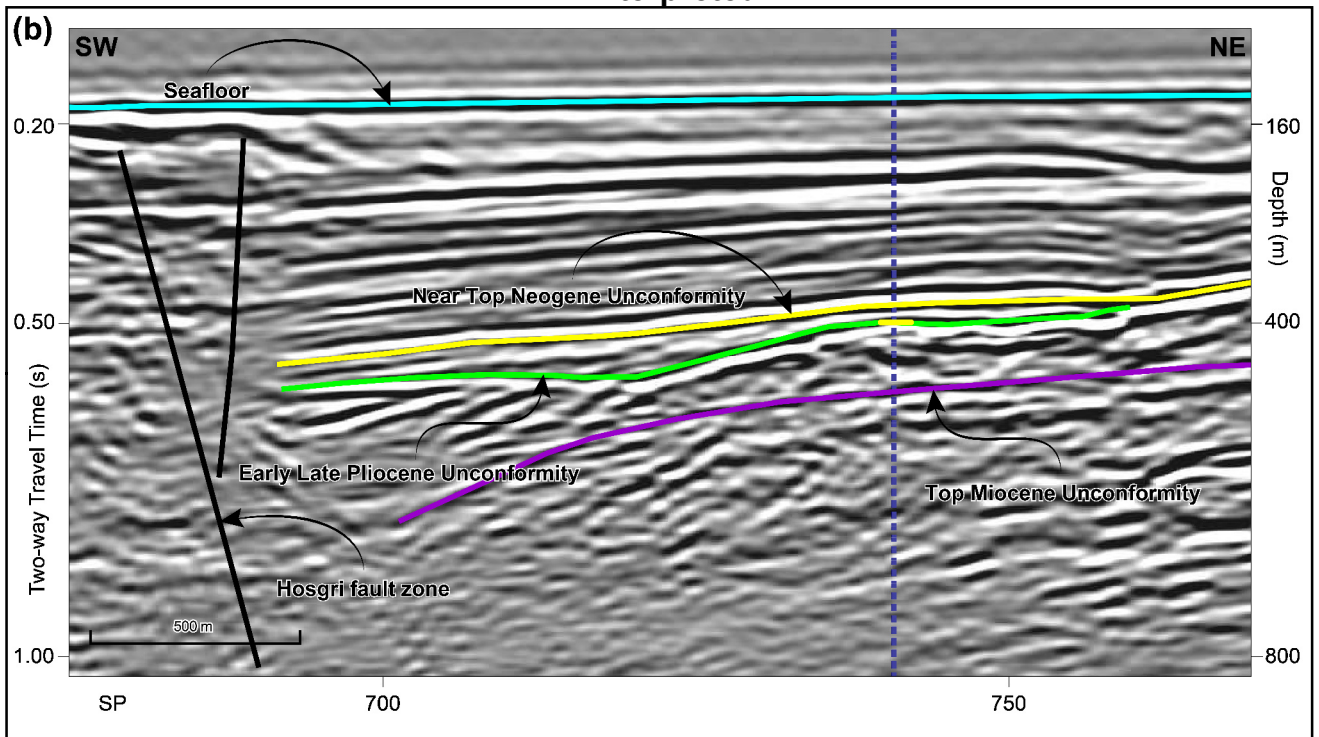
Pacific Gas and Electric Company

Figure **A-1**

Uninterpreted

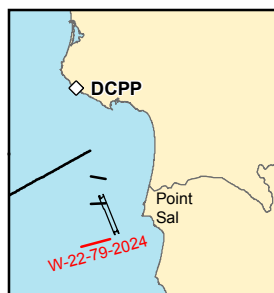


Interpreted



EXPLANATION

- Seafloor
- Hosgri Fault
- Near Top Neogene Unconformity
- Early Late Pliocene Unconformity
- Top Miocene Unconformity



1979 Line W-22-2024,  
Offshore Point Sal

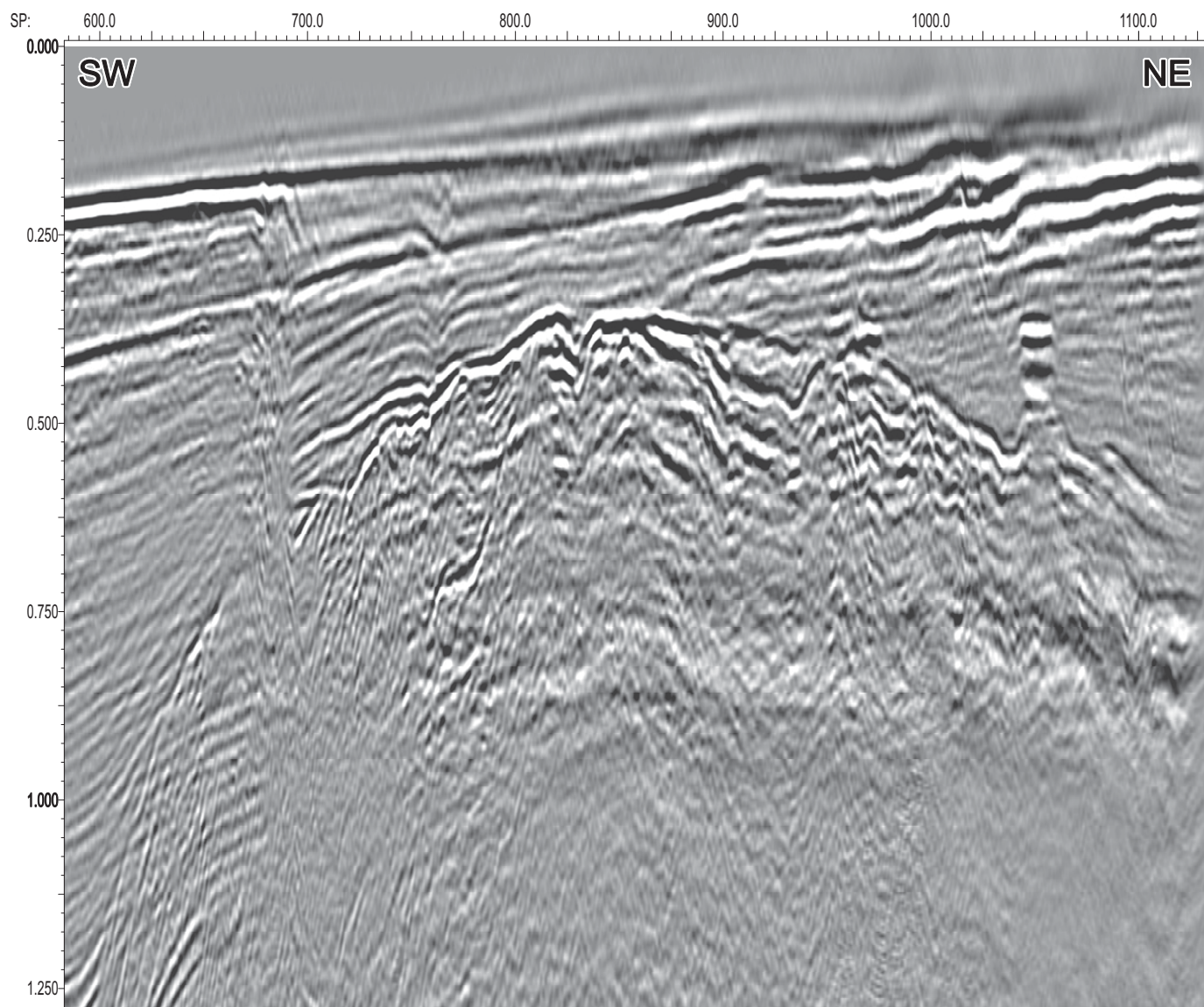
OFFSHORE LESS STUDIES



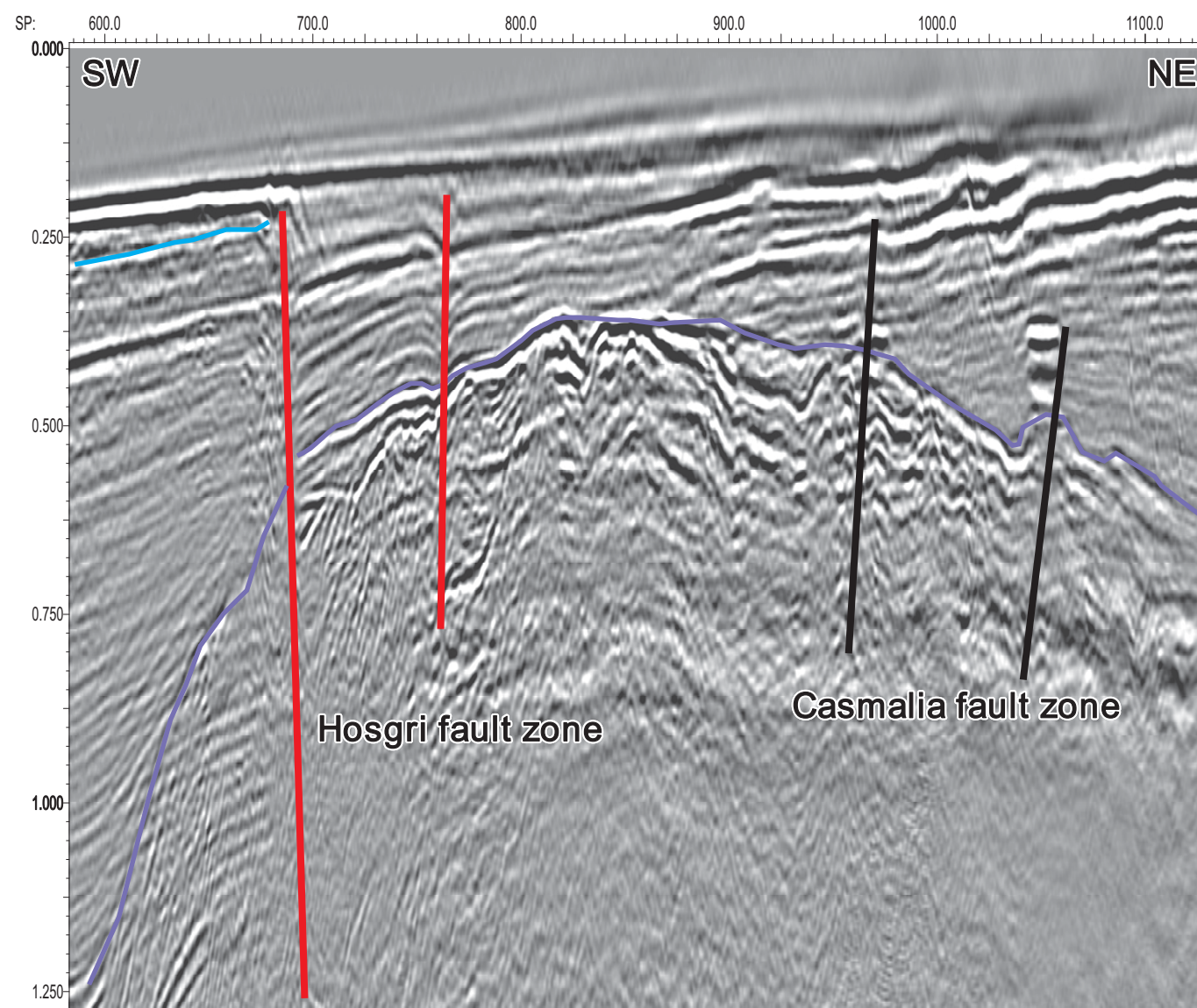




(a) Uninterpreted

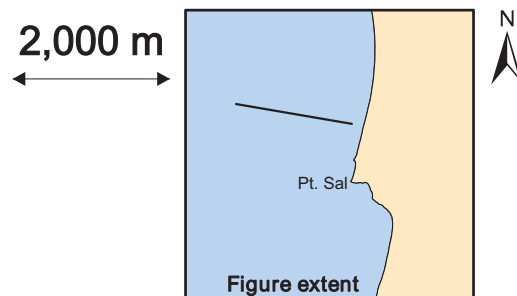


(b) Interpreted



**EXPLANATION**

- Mapped active fault splay (Fugro Consultants, 2014)
- Mapped inactive fault splay (Fugro Consultants, 2014)
- Top Upper Pleistocene deposits
- Top of bedrock



GSI 1985 Line SM-201 Showing Regional Structure Between HFZ and Casmalia Faults, Offshore Point Sal

OFFSHORE LESS STUDIES

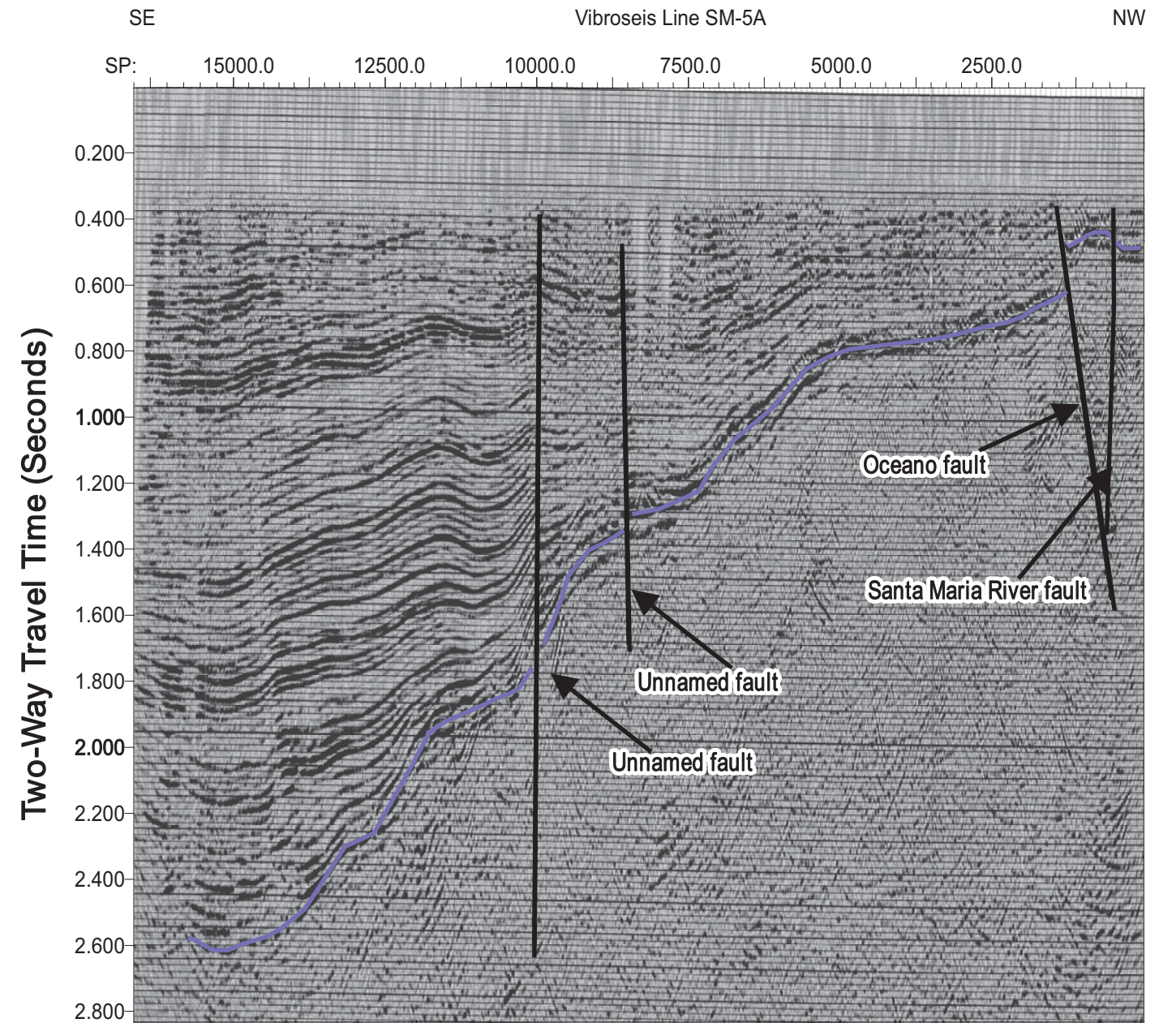
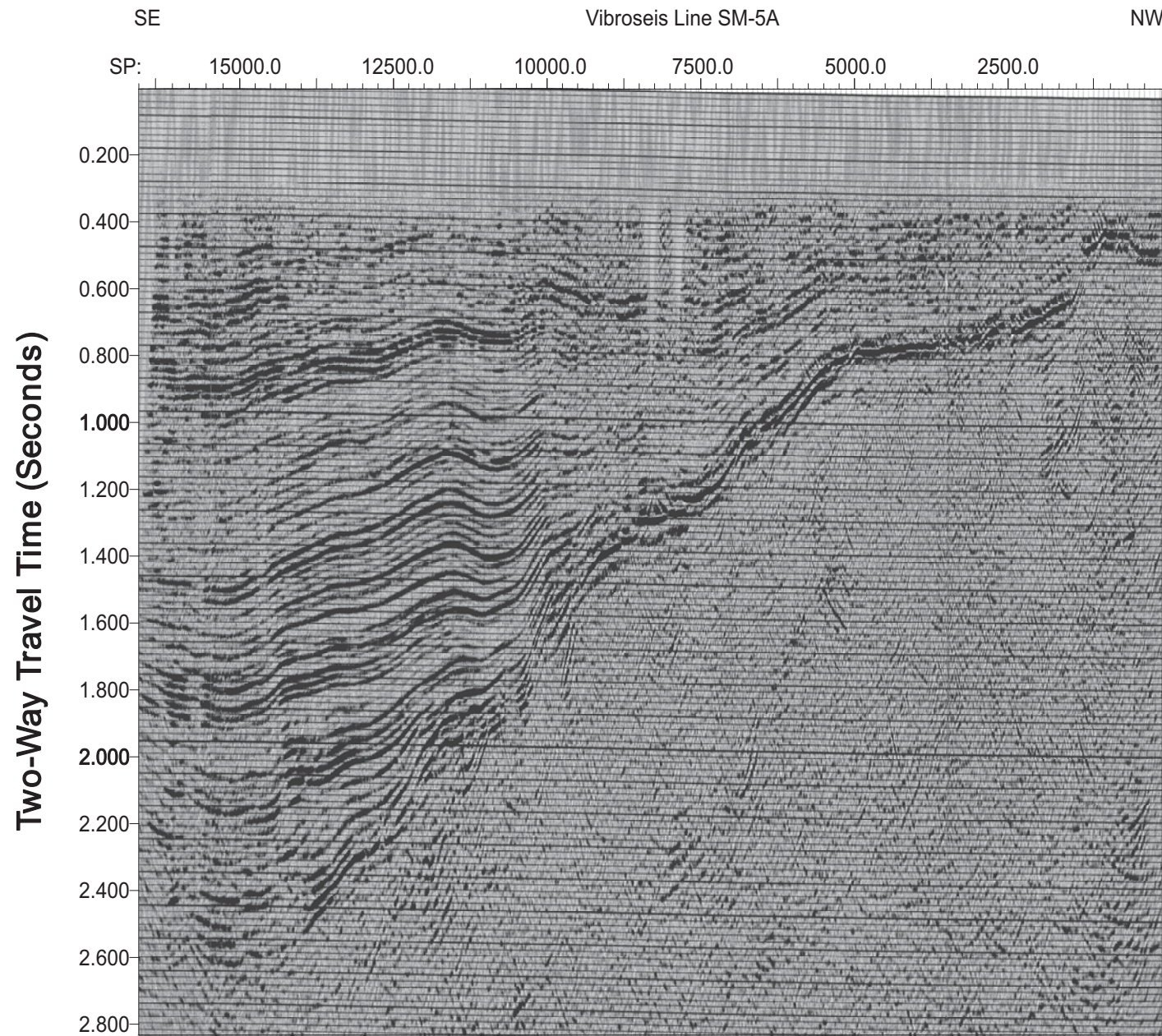
File Path: N:\Projects\04\_2013\04\_7922\_4500\_PGESeismicData\Interpretation\Outputs\2014\_04\_20\_LESSStudiesRev3\pdf\Figure-G-3-SM201.pdf; User: Robert Dame, Fugro; Rev. 3



File Path: N:\Projects\04\_2013\04\_7922\_4500\_PGESeismicData\Interpretation\Outputs\2014\_04\_20\_LESSStudiesRev3\pdf\Figure-G-5-SM-5A.pdf; User: Robert Dame, Fugro; Rev: 3

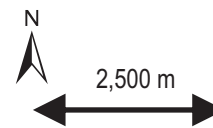
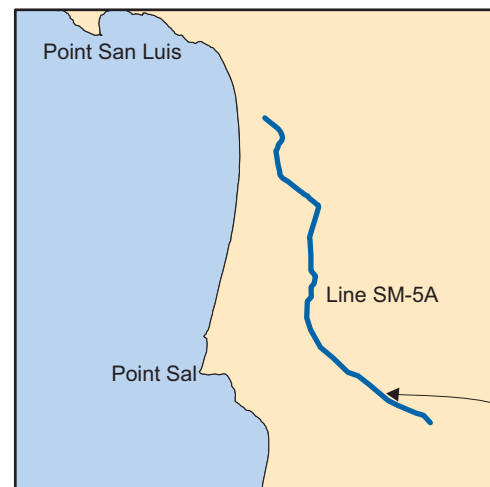
**(a) Uninterpreted**

**(b) Interpreted**



**EXPLANATION**

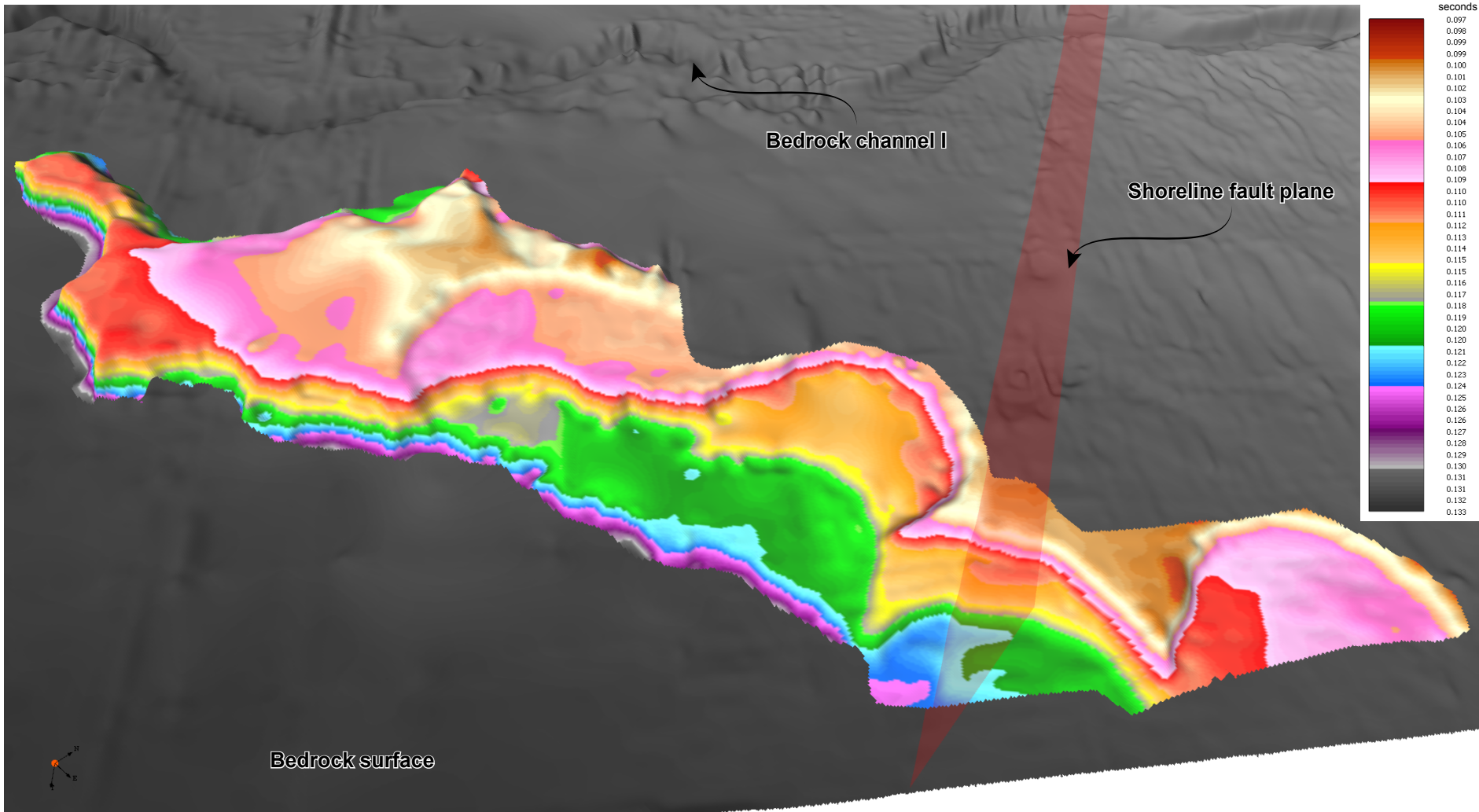
- Mapped fault splay
- Top of bedrock



<b>Line SM-5A, Onshore Nipomo Mesa and Santa Maria River Valley</b>	
<b>OFFSHORE LESS STUDIES</b>	
Pacific Gas and Electric Company	Figure <b>A-5</b>



File path: N:\Projects\04\_2013\04\_7922\_4500\_PGESeismicData\Interpretation\Outputs\2014\_04\_20\_LESSStudiesRev\3d\Figure\_A-6\_3D\_Paleoshoreline.ai; Date: 07/27/2014; User: Bryan Bergkamp; Figuro: Rev.3



**3D Perspective View of Paleoshoreline and Bedrock Surface, San Luis Obispo Bay**

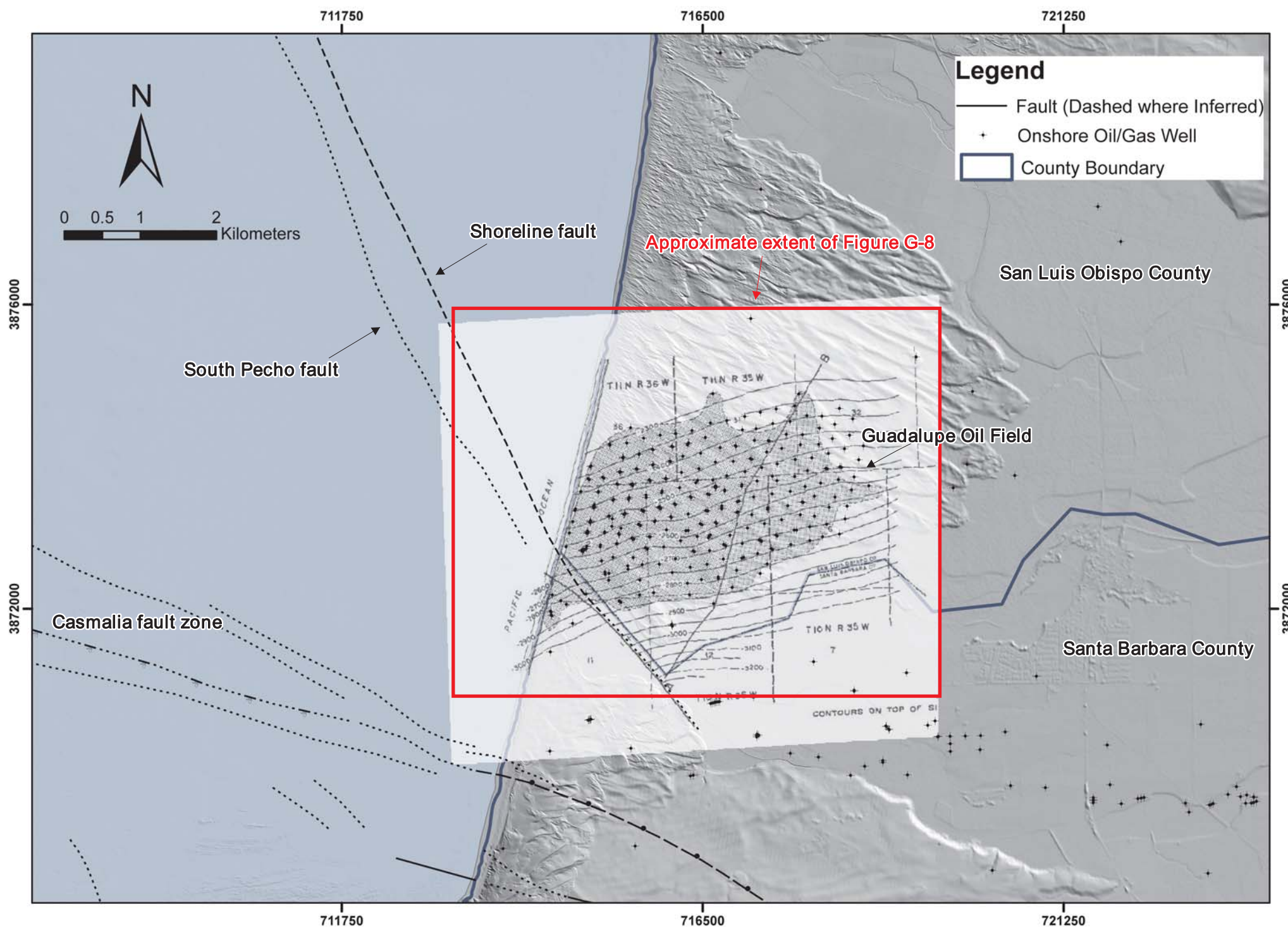
**OFFSHORE LESS STUDIES**

**Pacific Gas and Electric Company**

Figure **A-6**

Note: See Figures 7-22 and 7-24 for strandline locations and depth converted grid.

File Path: N:\Projects\04\_2013\04\_7922\_4500\_PGESeismicData\Interpretation\Outputs\2014\_04\_20\_LESSStudiesRev3\pdf\Figure-G-7-Guadalupe.pdf; Date: 07/17/2014; User: Robert Dame, Fugro; Rev. 3



Note: TIFF image showing Guadalupe Oil Field Top Sisquoc Structure originally published by the California Division of Oil, Gas, and Geothermal Resources (1992).

Map projection and scale: WGS 84 / UTM 10N

**Southern Extent Shoreline Fault near Guadalupe, San Luis Obispo Bay**

OFFSHORE LESS STUDIES



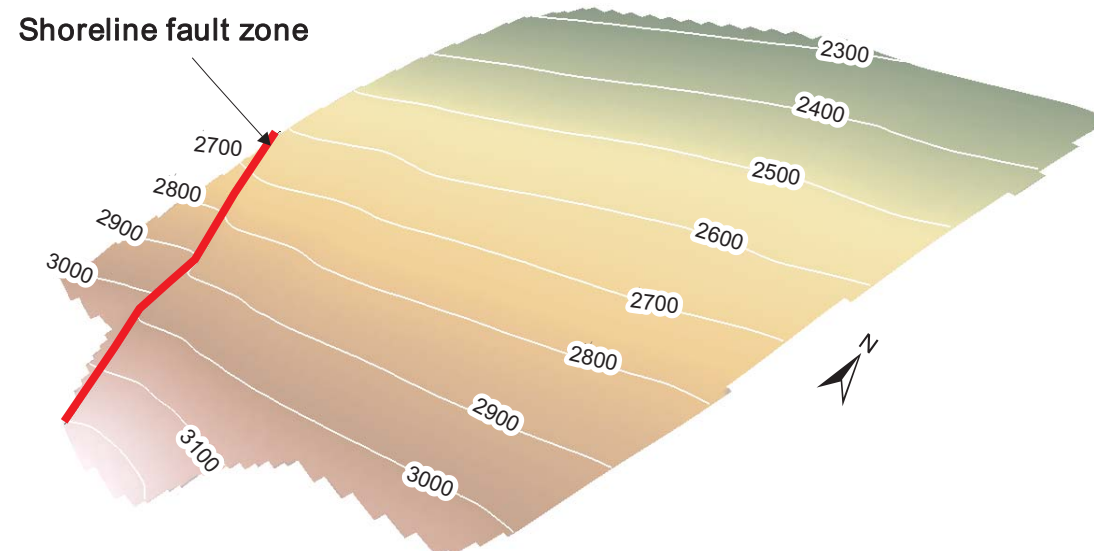
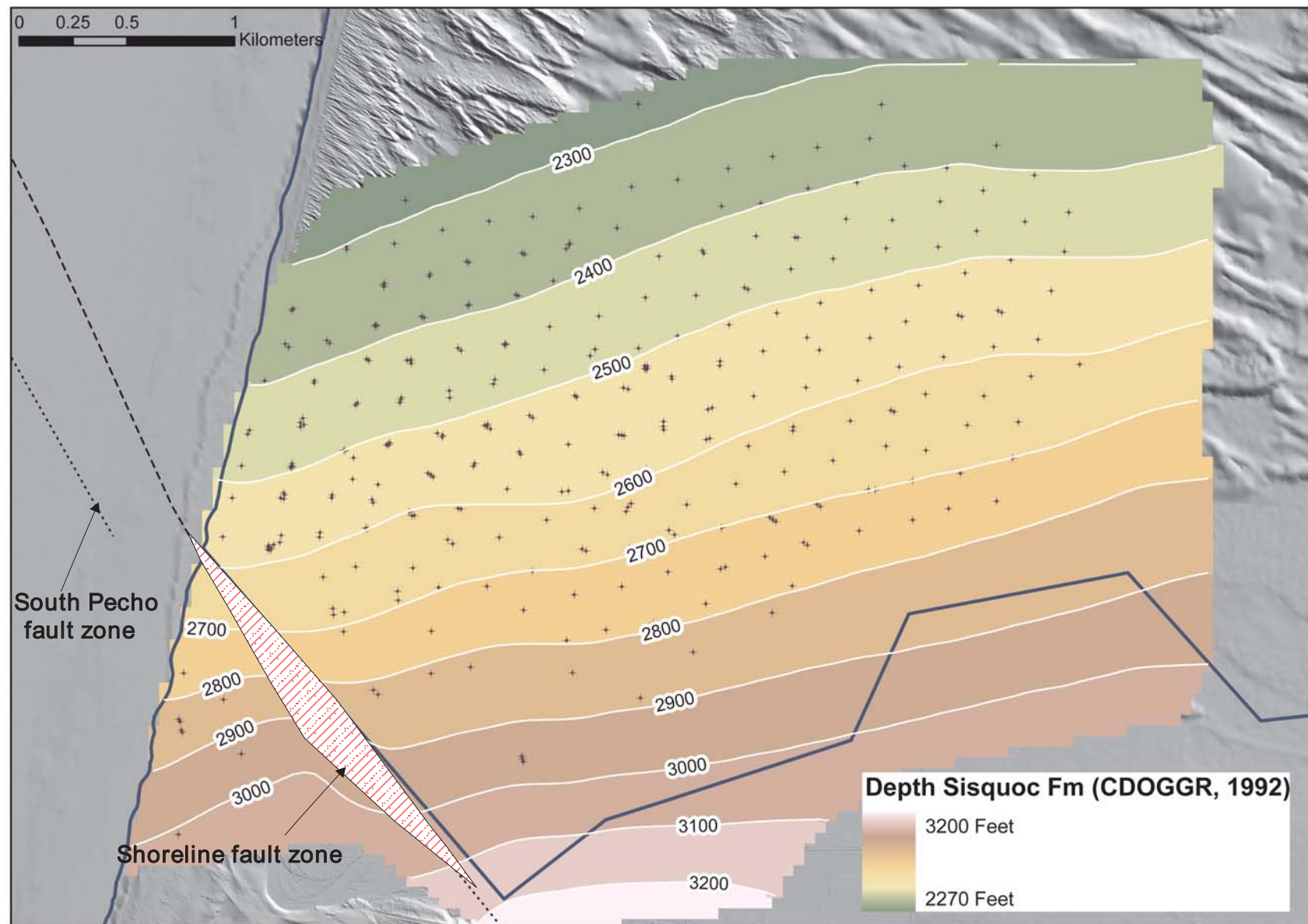
Pacific Gas and Electric Company

Figure A-7



(a) Plan view of top of Sisquoc Formation near Guadalupe

(b) 3D perspective view of top of Sisquoc Formation near Guadalupe



**Legend**

- Fault (Dashed where Inferred)
- + Onshore Oil/Gas Well
- County Boundary

Note: TIFF image showing Guadalupe Oil Field Top Sisquoc Structure originally published by the California Division of Oil, Gas, and Geothermal Resources (1992).

N  
Map projection and scale: WGS 84 / UTM 10N

Plan and Perspective View of Top of Sisquoc Formation and Shoreline Fault near Guadalupe, San Luis Obispo Bay

OFFSHORE LESS STUDIES



Pacific Gas and Electric Company

Figure A-8