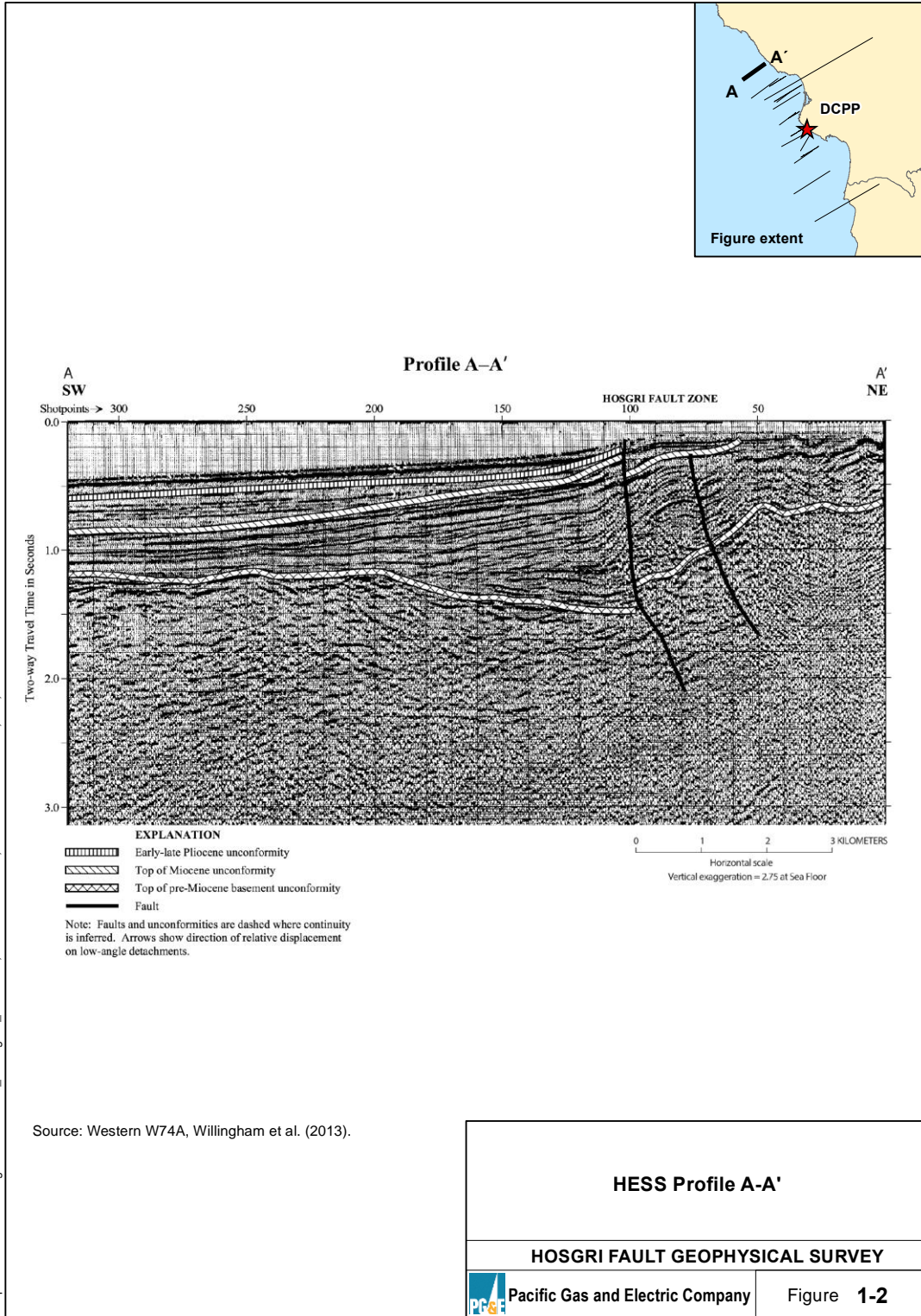
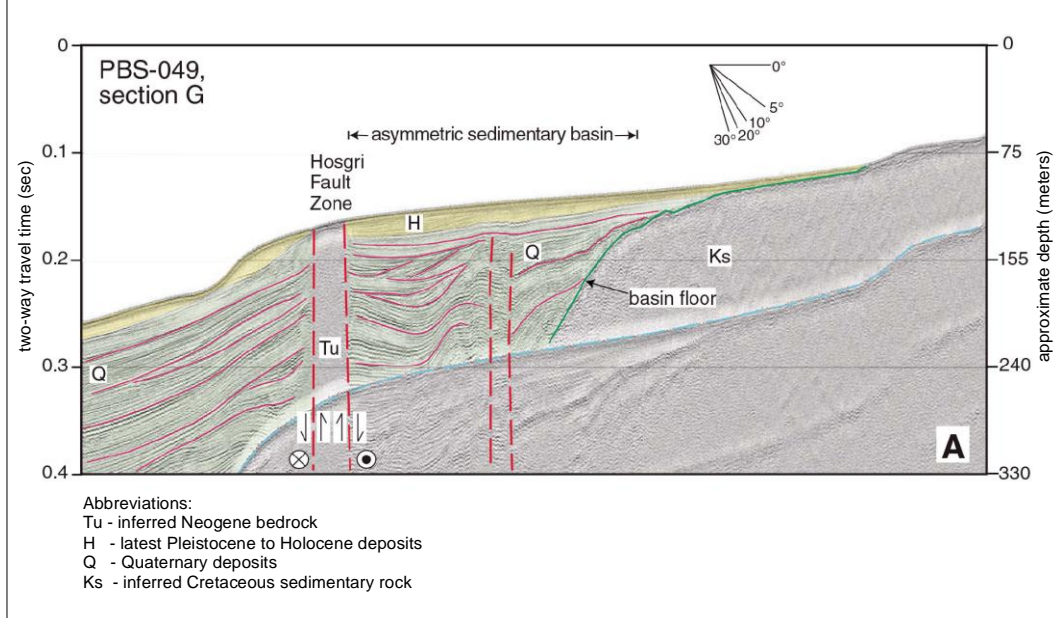


File path: S:\1005\051\Figures\20140625_SN\Figure_1-01.mxd; Date: 07/31/2014; User: Serkan Bozkurt, LCI; Rev.1

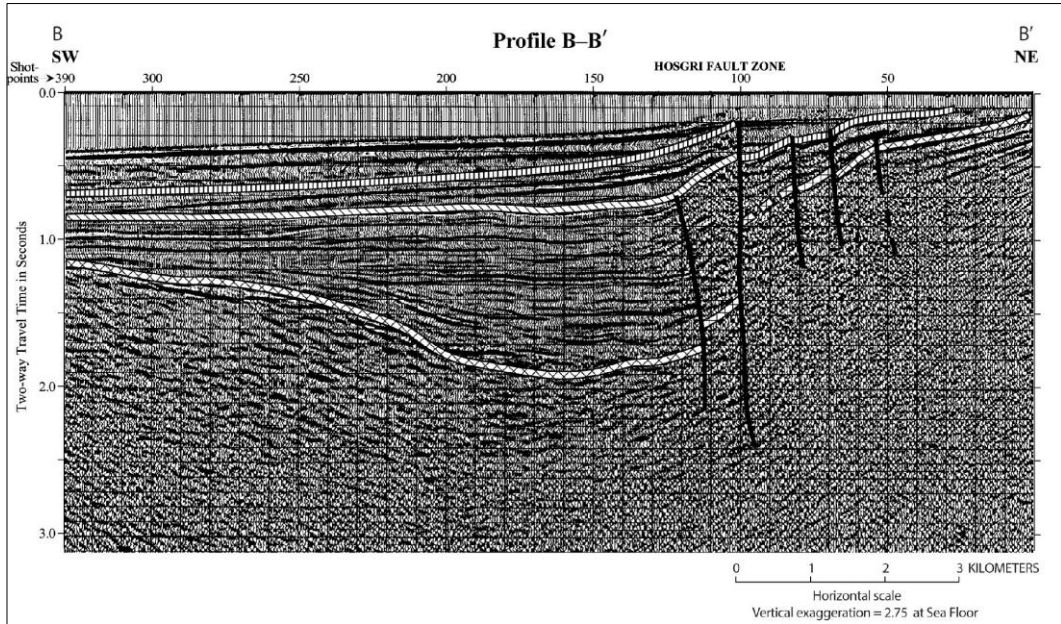


File path: S:\1005\051\Figures\20140625_SNI\Figure_1-02.mxd; Date: 07/31/2014; User: Serkan Bozkurt, LC; Rev: 1

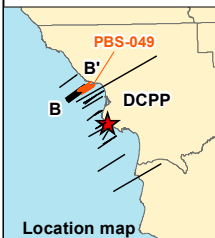
(a) USGS 2D LESS profile (PBS-049, Johnson and Watt, 2012)



(b) HESS Profile B - B' (Western W76A, Willingham et al., 2013)



File path: S:\10051051\Figures\20140625_SNI\Figure_1-03.mxd; Date: 07/31/2014; User: Alex Remar, LCI; Rev.1



EXPLANATION

- Early-late Pliocene unconformity
 - Top of Miocene unconformity
 - Top of pre-Miocene basement unconformity
 - Fault
- Note: Faults and unconformities are dashed where continuity is inferred. Arrows show direction of relative displacement on low-angle detachments.

Note: Difference in vertical scale exists between (a) and (b).

USGS 2D LESS Profile PBS-049 and HESS Profile B - B'

HOSGRI FAULT GEOPHYSICAL SURVEY

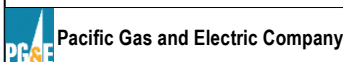
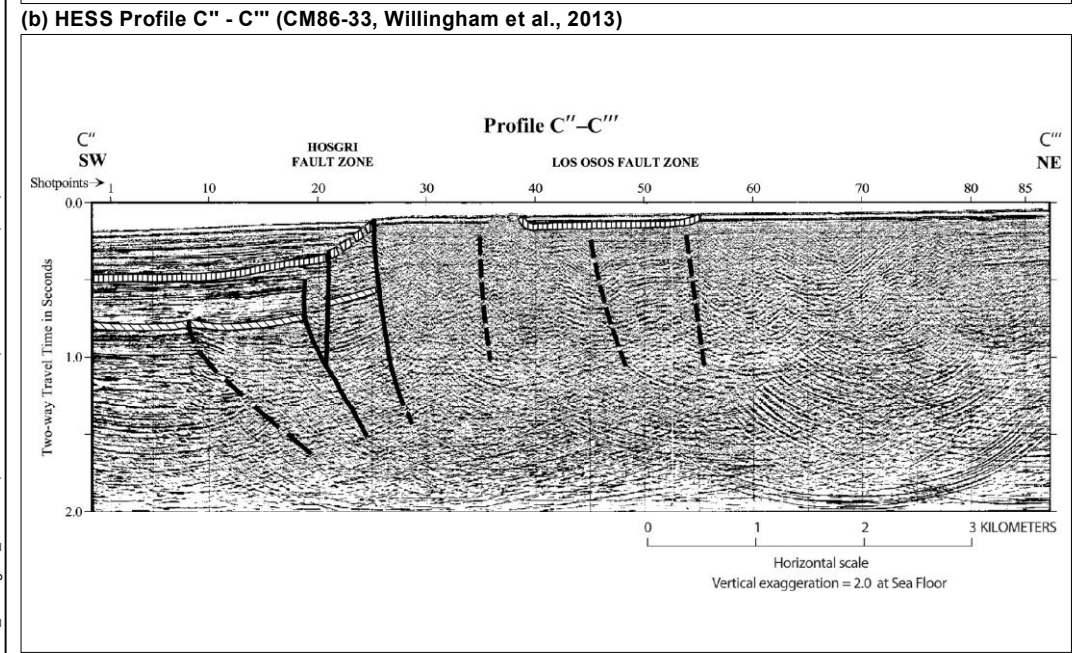
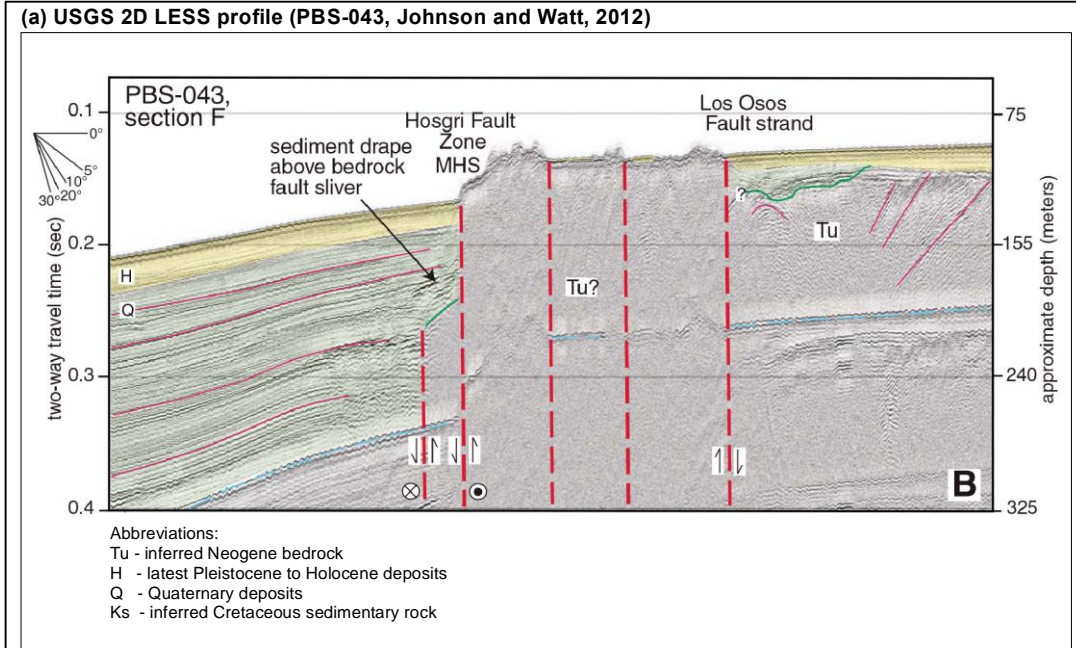
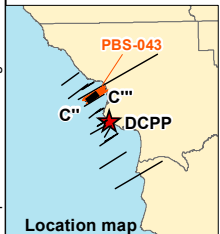


Figure 1-3



File path: S:\1005\051\Figures\20140625_SNI\Figure_1-04.mxd; Date: 07/31/2014; User: Alex Remar; LCI: Rev.1



EXPLANATION

- Early-late Pliocene unconformity
- Top of Miocene unconformity
- Top of pre-Miocene basement unconformity
- Fault

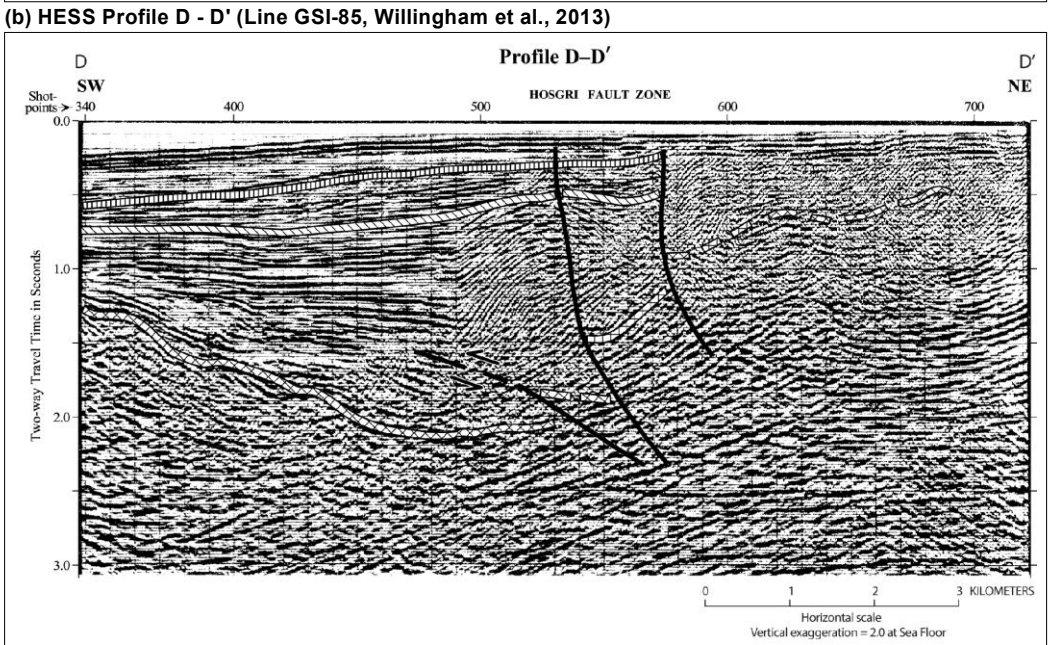
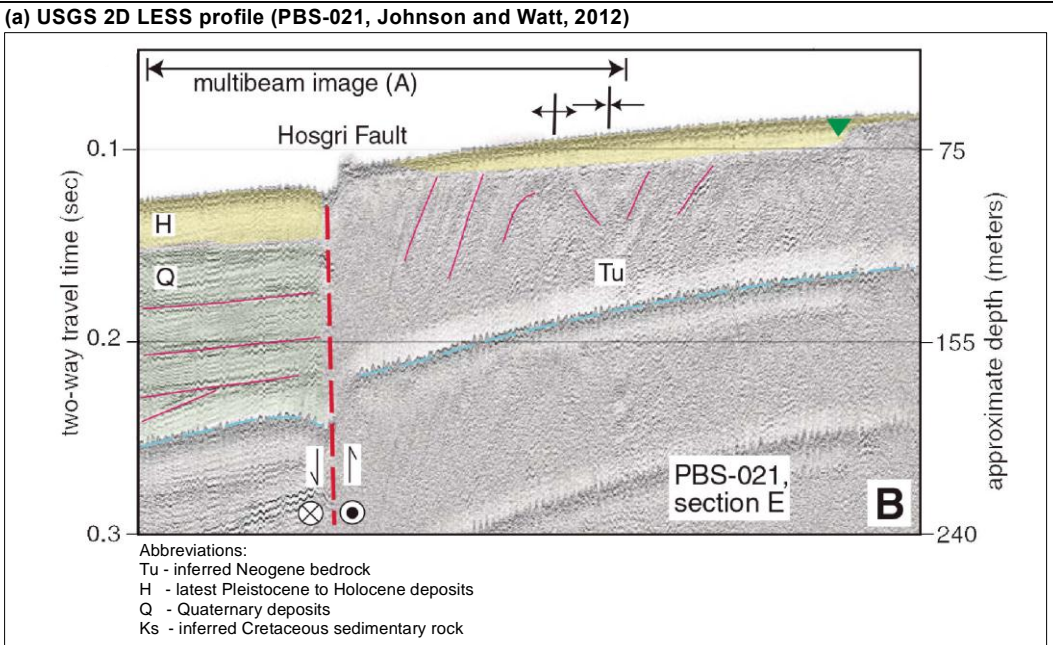
Note: Faults and unconformities are dashed where continuity is inferred. Arrows show direction of relative displacement on low-angle detachments.

Note: Difference in vertical scale exists between (a) and (b).

**USGS 2D LESS Profile PBS-043
 and HESS Profile C'' - C'''**

HOSGRI FAULT GEOPHYSICAL SURVEY

Pacific Gas and Electric Company
 Figure **1-4**



File path: S:\1005\051\Figures\20140625_SNI\Figure_1-05.mxd; Date: 07/31/2014; User: Alex Remar, LCI; Rev: 1

Location map

EXPLANATION

- Early-late Pliocene unconformity
- Top of Miocene unconformity
- Top of pre-Miocene basement unconformity
- Fault

Note: Faults and unconformities are dashed where continuity is inferred. Arrows show direction of relative displacement on low-angle detachments.

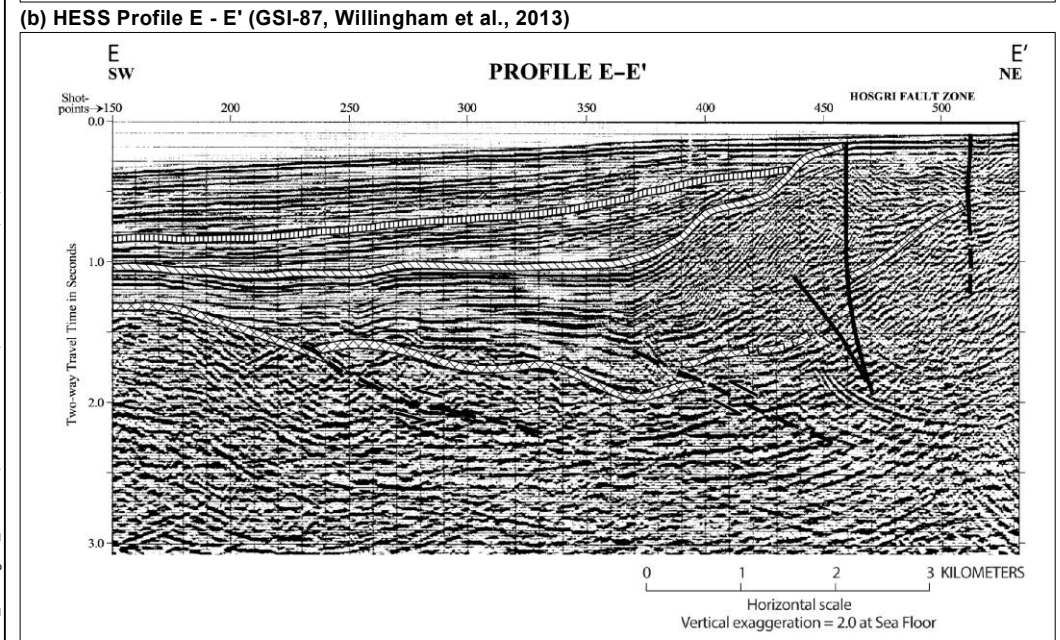
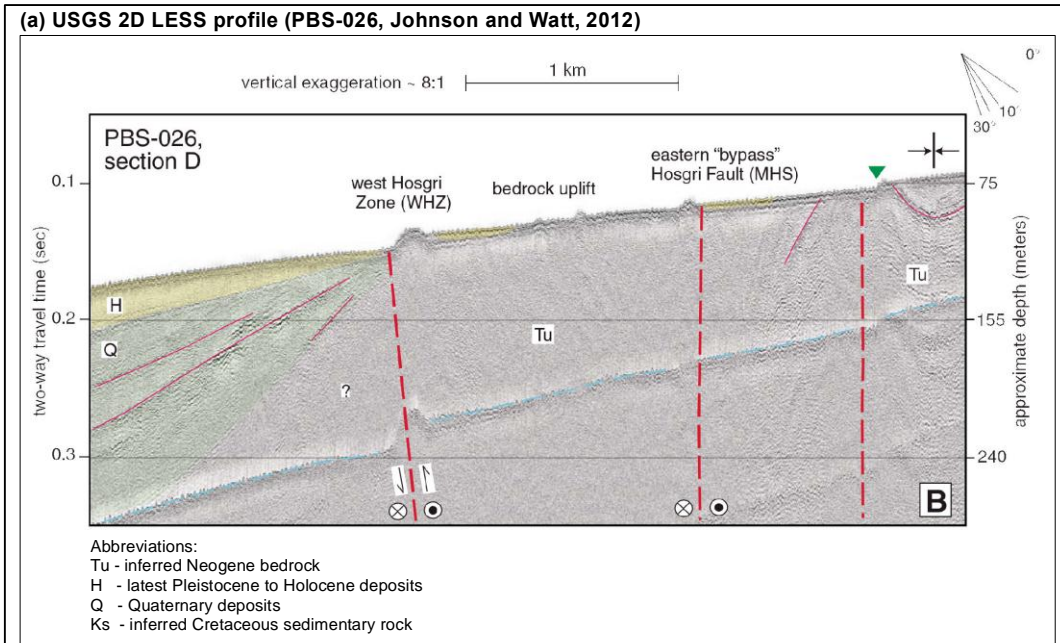
Note: Difference in vertical scale exists between (a) and (b).

**USGS 2D LESS Profile PBS-021
 and HESS Profile D - D'**

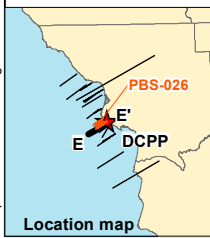
HOSGRI FAULT GEOPHYSICAL SURVEY

Pacific Gas and Electric Company

Figure **1-5**



File path: S:\1005051\Figures\20140625_SNI\Figure_1-06.mxd; Date: 07/31/2014; User: Alex Remar; LCI: Rev.1



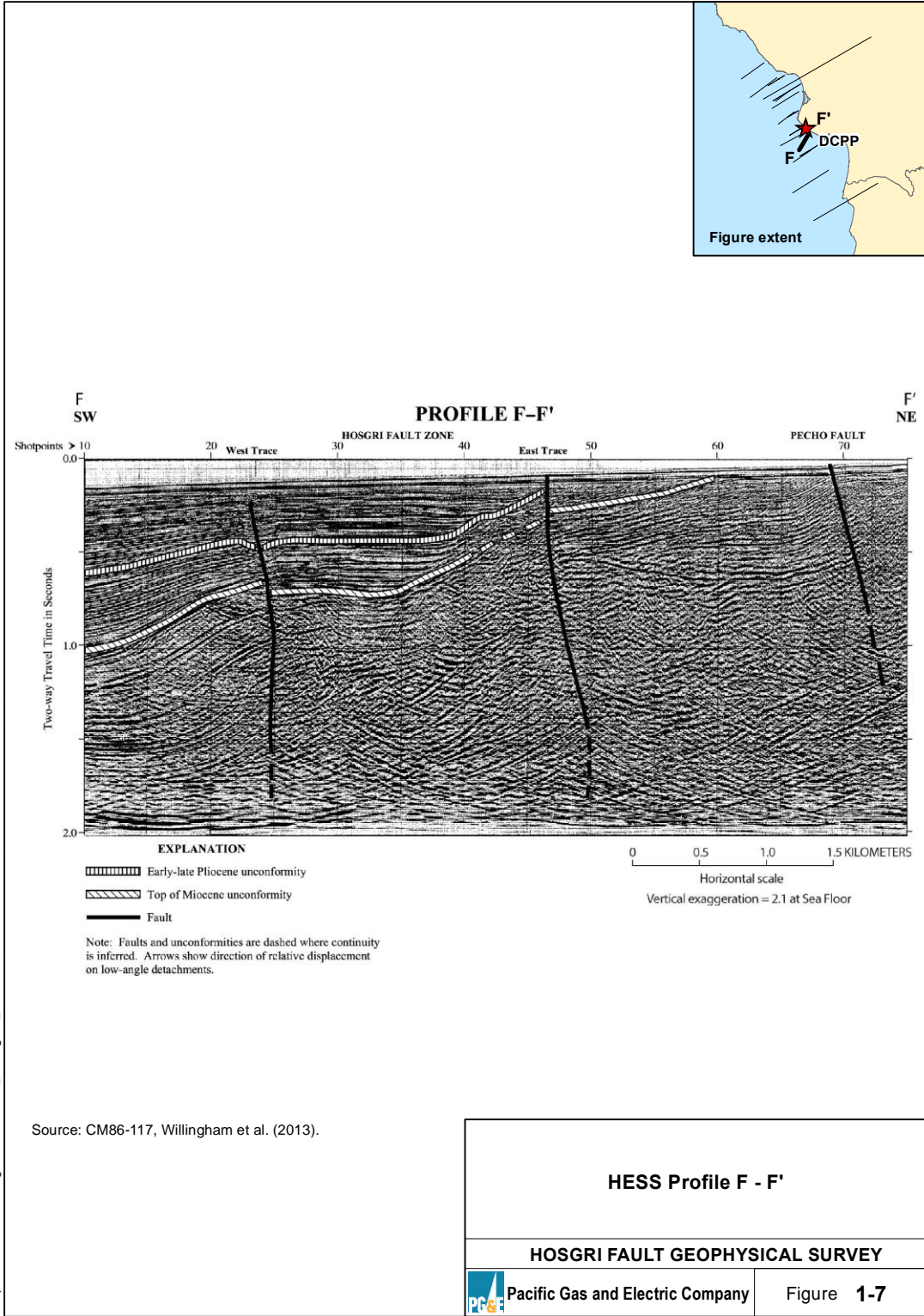
EXPLANATION

- Early-late Pliocene unconformity
- Top of Miocene unconformity
- Top of pre-Miocene basement unconformity
- Fault

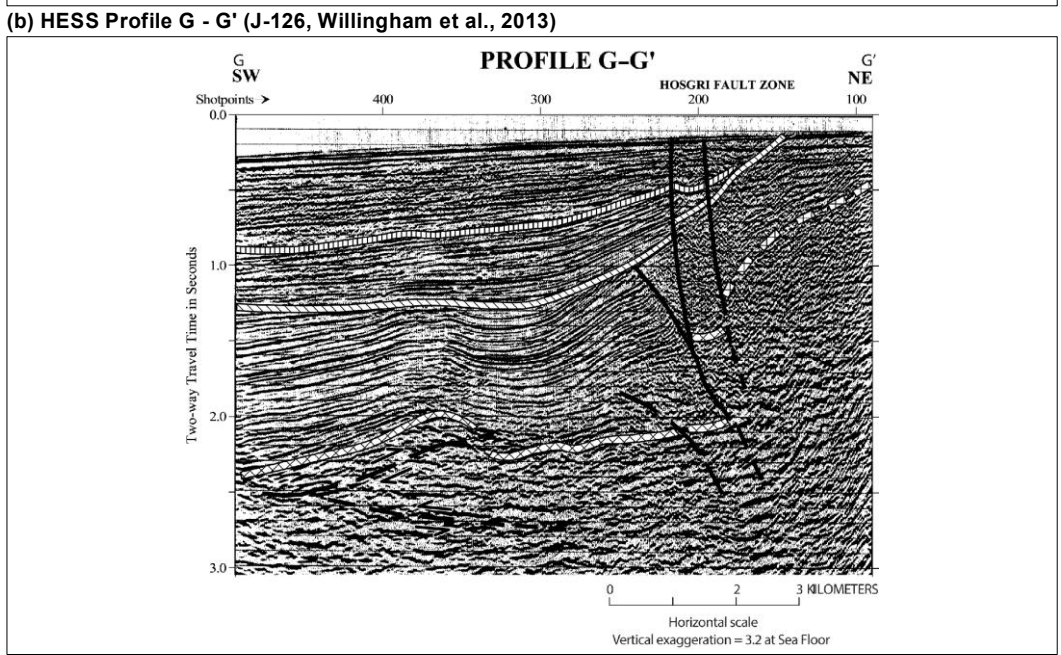
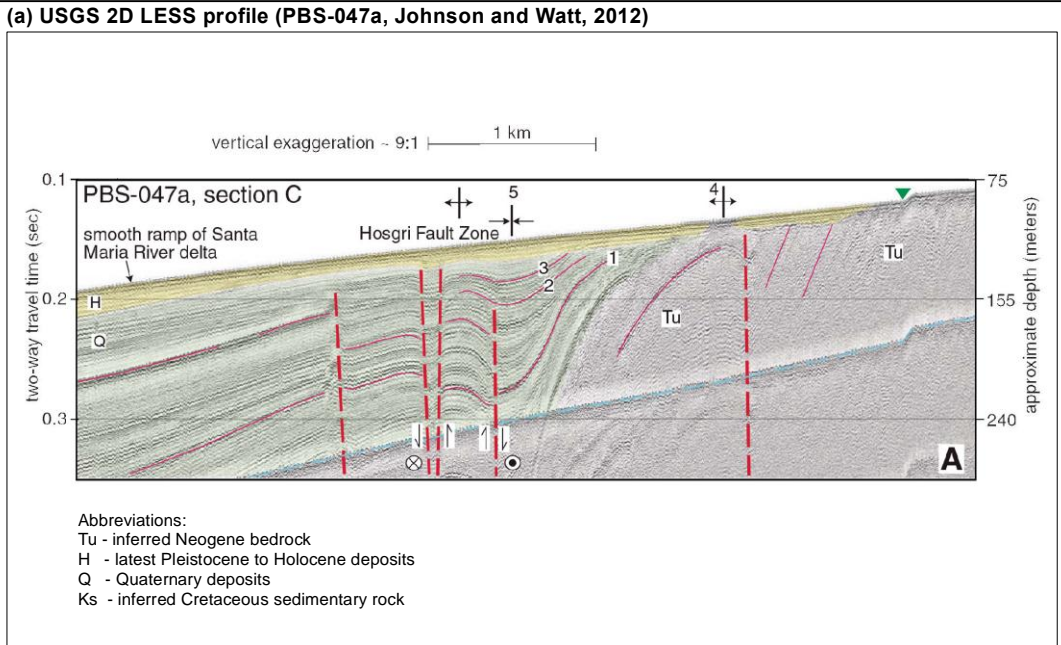
Note: Faults and unconformities are dashed where continuity is inferred. Arrows show direction of relative displacement on low-angle detachments.

Note: Difference in vertical scale exists between (a) and (b).

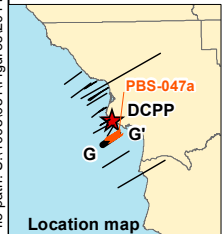
USGS 2D LESS Profile PBS-026 and HESS Profile E - E'	
HOSGRI FAULT GEOPHYSICAL SURVEY	
Pacific Gas and Electric Company	Figure 1-6



File path: S:\1005\051\Figures\20140625_SNI\Figure_1-07.mxd; Date: 07/31/2014; User: Serkan Bozkurt, LC; Rev: 1



File path: S:\10051051\Figures\20140625_SNI\Figure_1-08.mxd; Date: 07/31/2014; User: Alex Remar, LC; Rev: 1



EXPLANATION

- Early-late Pliocene unconformity
- Top of Miocene unconformity
- Top of pre-Miocene basement unconformity
- Fault

Note: Faults and unconformities are dashed where continuity is inferred. Arrows show direction of relative displacement on low-angle detachments.

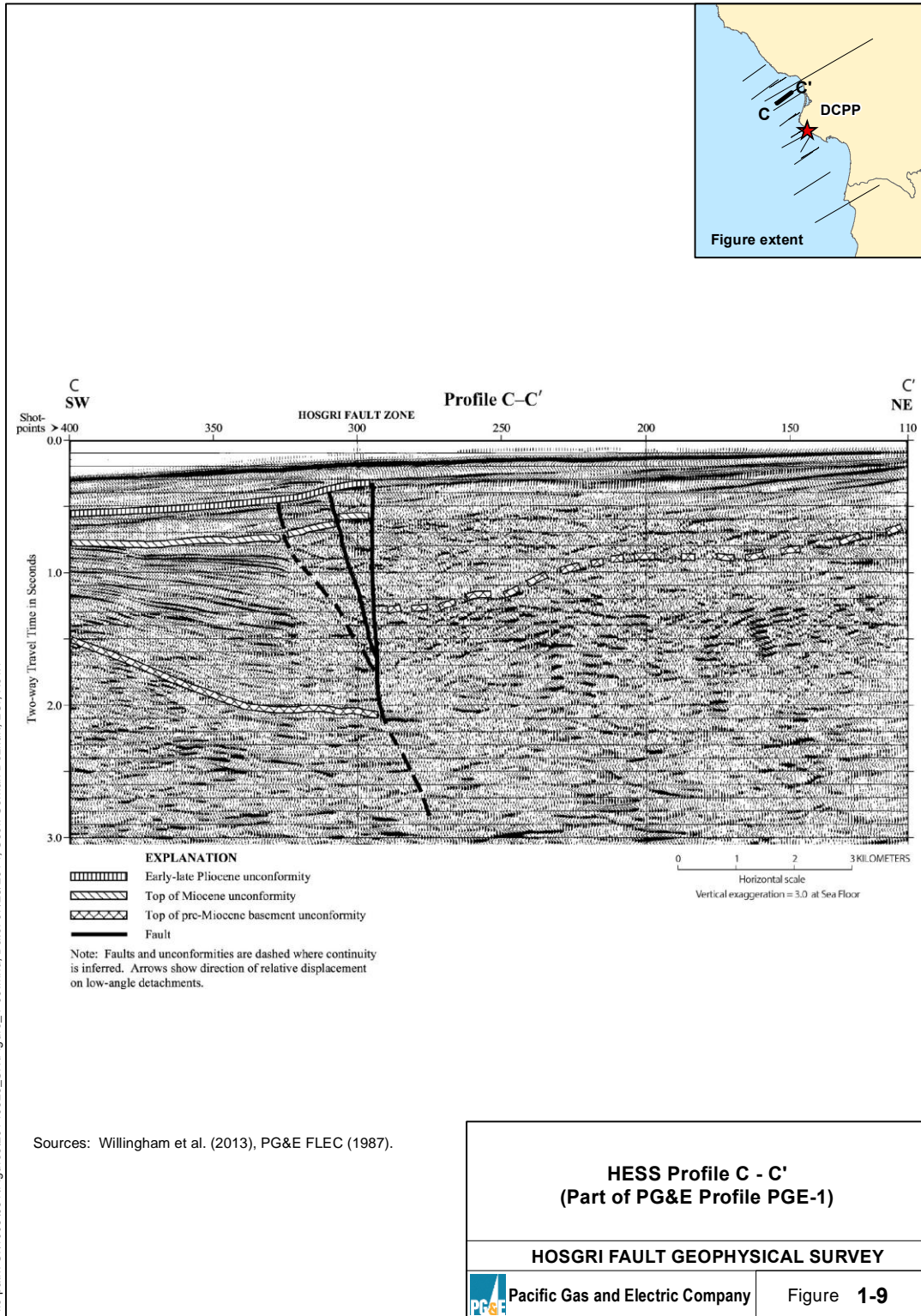
Note: Difference in vertical scale exists between (a) and (b).

**USGS 2D LESS Profile PBS-047a
 and HESS Profile G - G'**

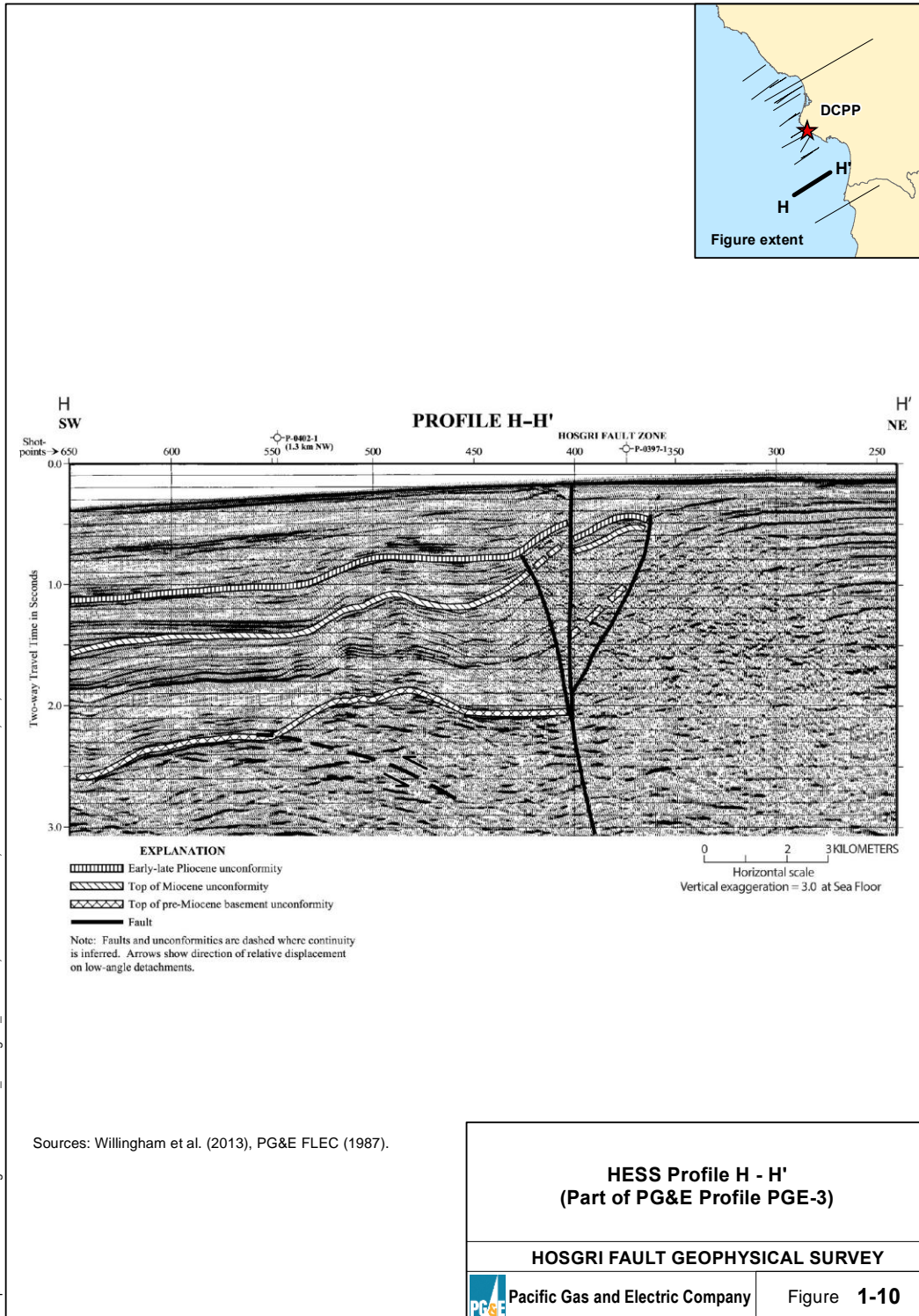
HOSGRI FAULT GEOPHYSICAL SURVEY

Pacific Gas and Electric Company

Figure 1-8

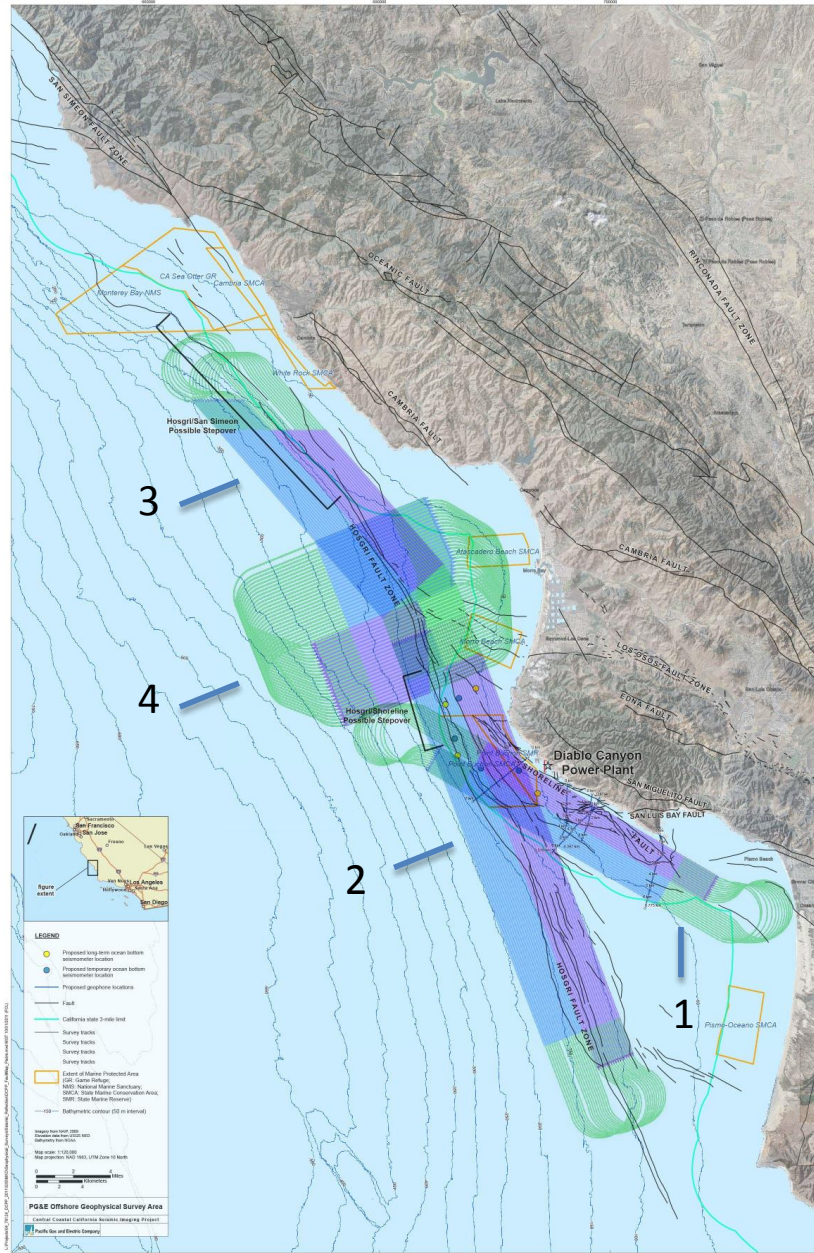



File path: S:\1005\05\Figures\20140625_SNI\Figure_1-09.mxd; Date: 07/28/2014; User: Serkan Bozkurt, LCI; Rev: 1

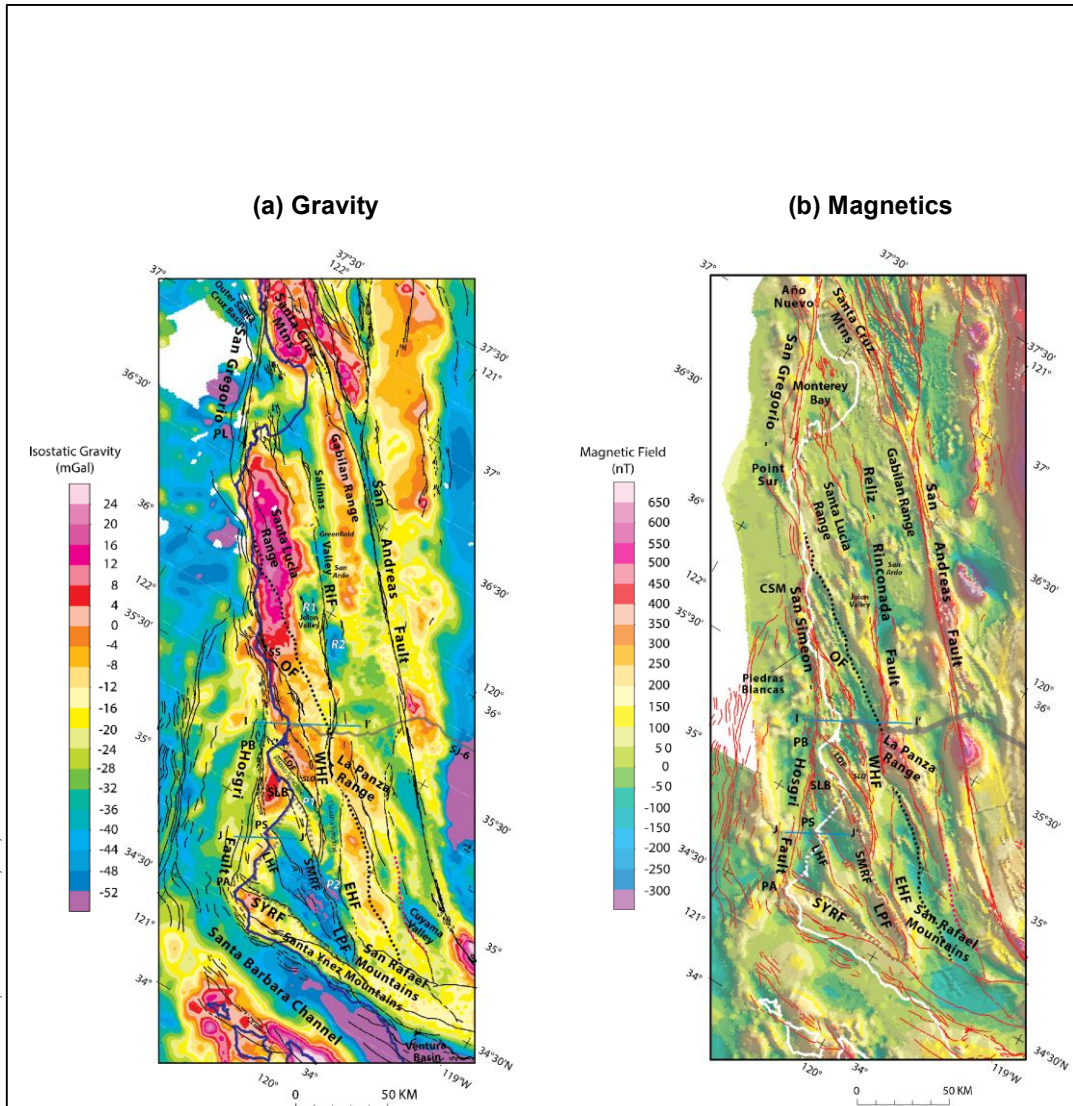


File path: S:\1005\051\Figures\20140625_SNI\Figure_1-10.mxd; Date: 07/28/2014; User: Serkan Bozkurt, LCI; Rev.1

S:\1005051\Figures\20140625_SNI\Figure_1-11.ai; Date: 07/17/2014; User: Serkan Bozkurt, LC; Rev: 1





Proposed Track Lines for PG&E CCCSIP HESS.	
PROJECT TITLE	
 Pacific Gas and Electric Company	Figure 1-11

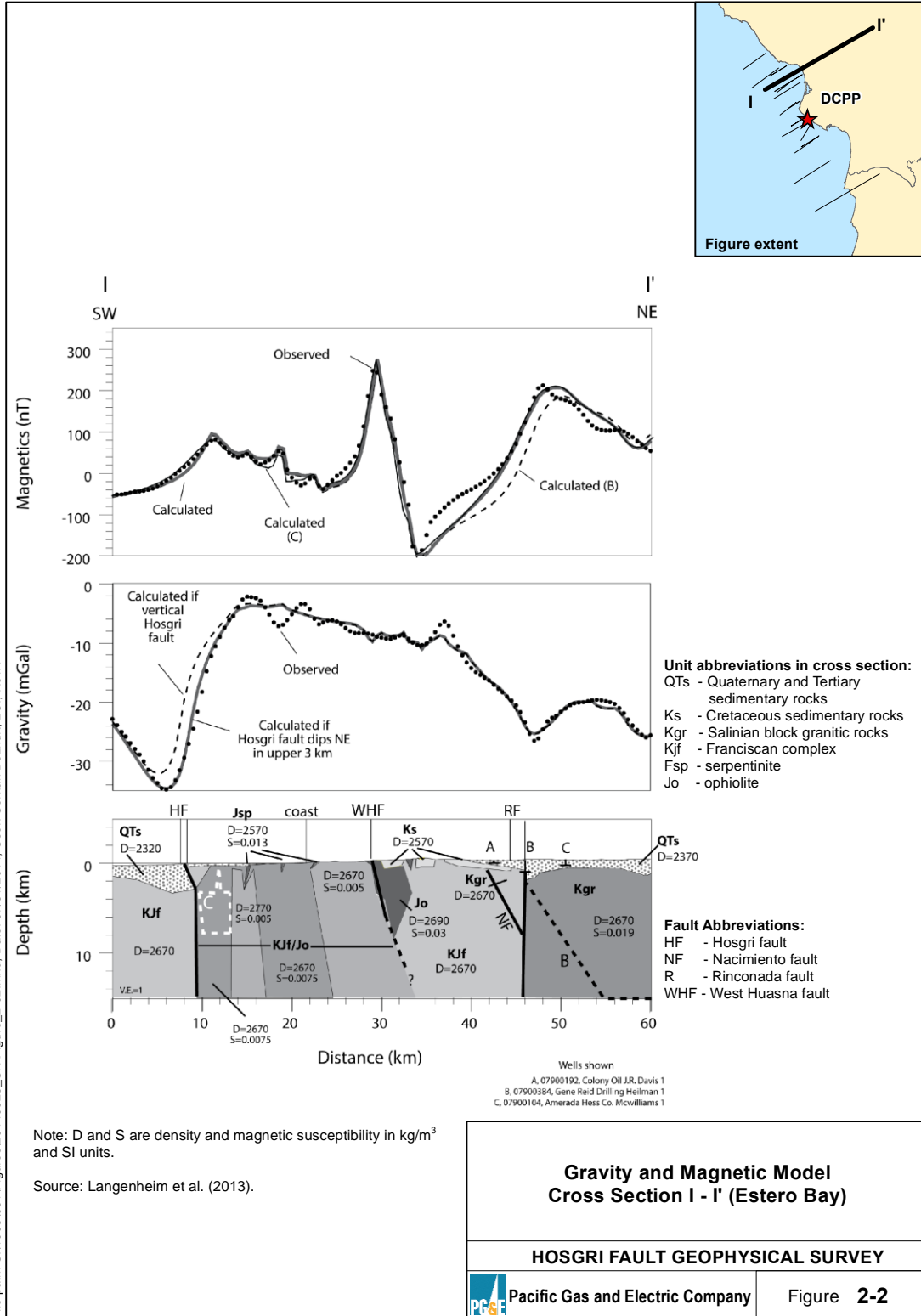


- Abbreviations:**
- | | | | |
|-------------------------|-------------------------------|--------------------|-----------------------|
| LHF - Lions Head fault | SYRF - Santa Ynez River fault | PB - Point Buchon | SLO - San Luis Obispo |
| LOF - Los Osos fault | WHF - West Huasna fault | PL - Point Lobos | SS - San Simeon |
| LPF - Little Pine fault | CSM - Cape San Marin | PS - Point Sal | |
| OF - Oceanic fault | PA - Point Arguello | SLB - San Luis Bay | |

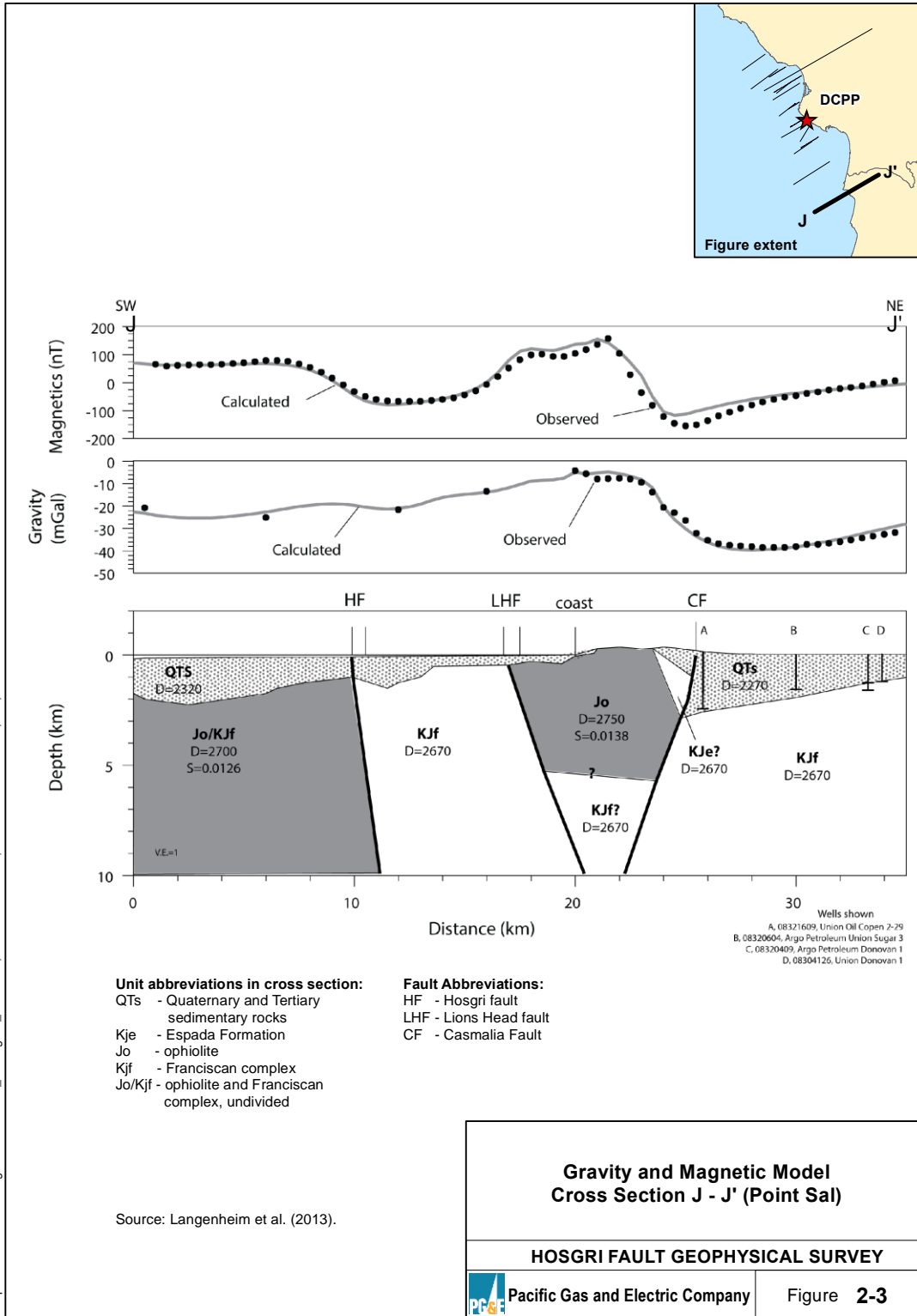
Source: Langenheim et al. (2013).

 <p>Figure extent</p>	<p>Potential Field Maps for California Coastal Region</p> <hr/> <p>HOSGRI FAULT GEOPHYSICAL SURVEY</p> <hr/> <p> Pacific Gas and Electric Company</p>
<p>Figure 2-1</p>	

File path: S:\1005\051\Figures\20140625_SNI\Figure_2-01.mxd; Date: 07/31/2014; User: Alex Remar, LCI; Rev: 1



File path: S:\1005051\Figures\20140625_SNI\Figure_2-02.mxd; Date: 07/31/2014; User: Serkan Bozkurt, LCI; Rev. 1



**Gravity and Magnetic Model
 Cross Section J - J' (Point Sal)**

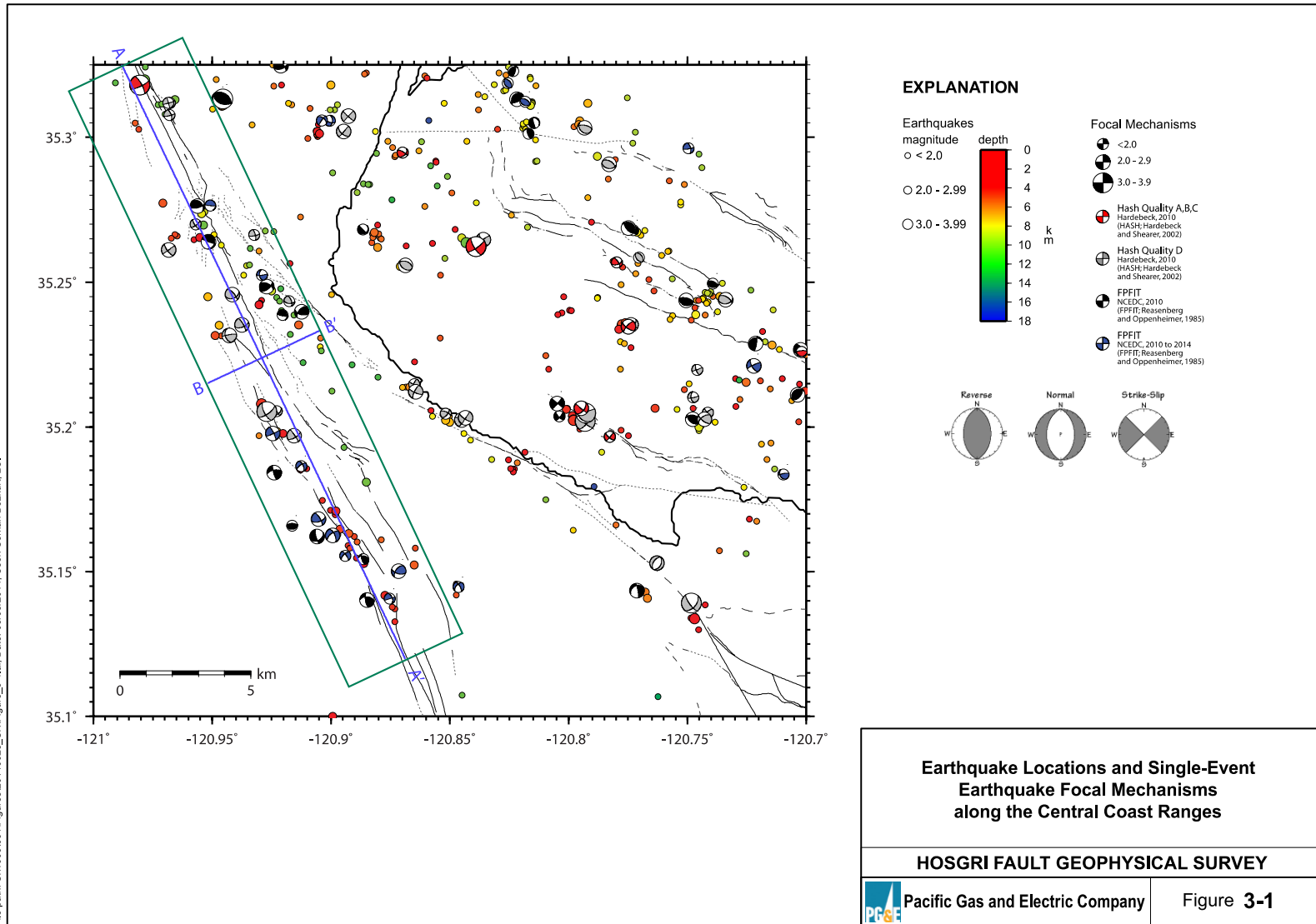
HOSGRI FAULT GEOPHYSICAL SURVEY

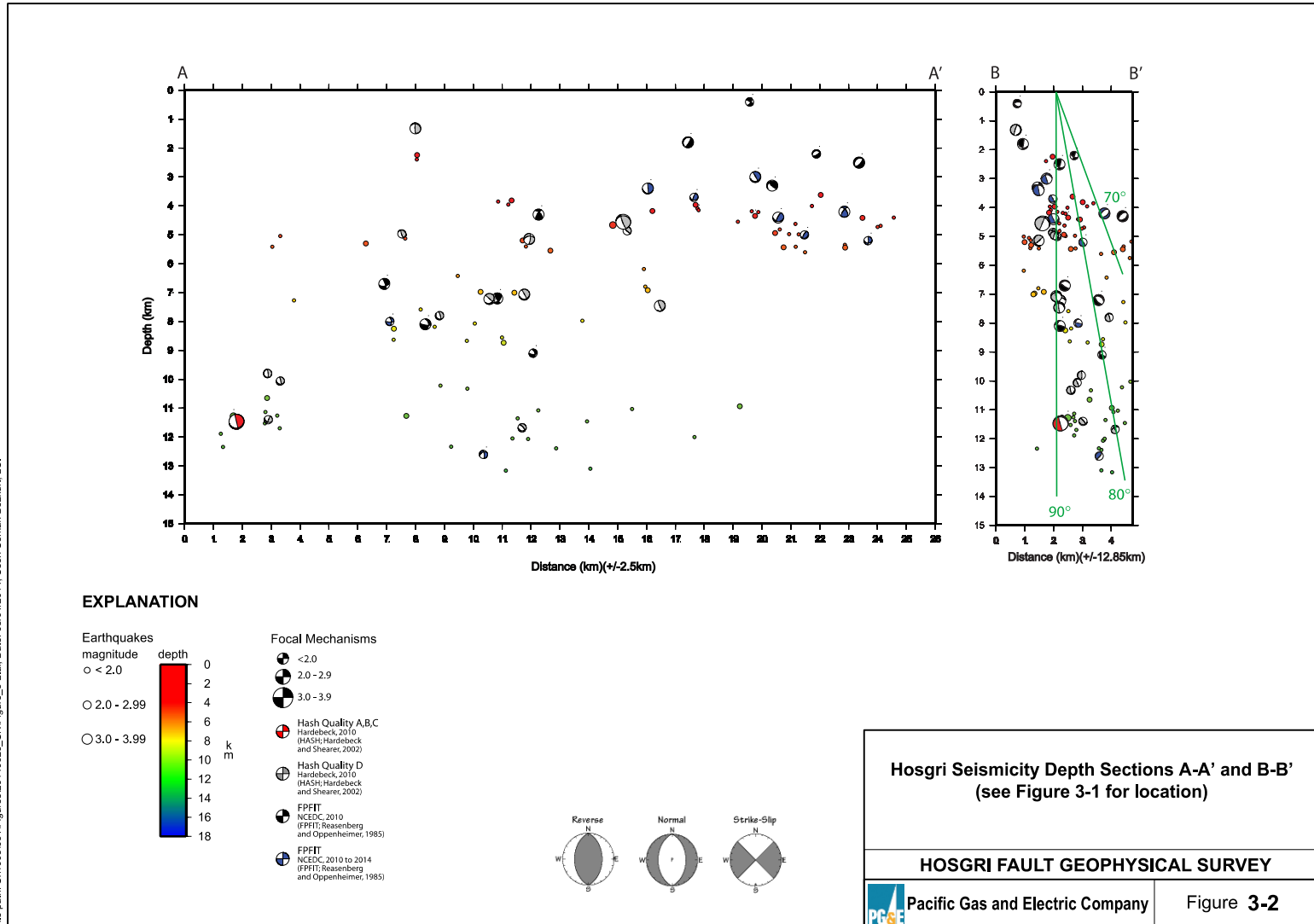


Pacific Gas and Electric Company

Figure 2-3

File path: S:\10051051\Figures\20140625_SMF\Figure_2-03.mxd; Date: 07/31/2014; User: Serkan Bozkurt, LC; Rev: 1





File path: S:\10090051\Figures\20140625_SNI\Figure_3-2.ai; Date: 08/01/2014; User: Serkan Bozkurt, LCI

