



# Equipment Reference Guide for Undergrounding Powerlines



To help keep you safe and the power on, we are moving powerlines underground in your neighborhood. This work will require new equipment in your area. We appreciate your patience and coordination.



During this wildfire safety work, it is important to place equipment in safe locations. Some equipment may require us to temporarily turn off your power for safe installation.

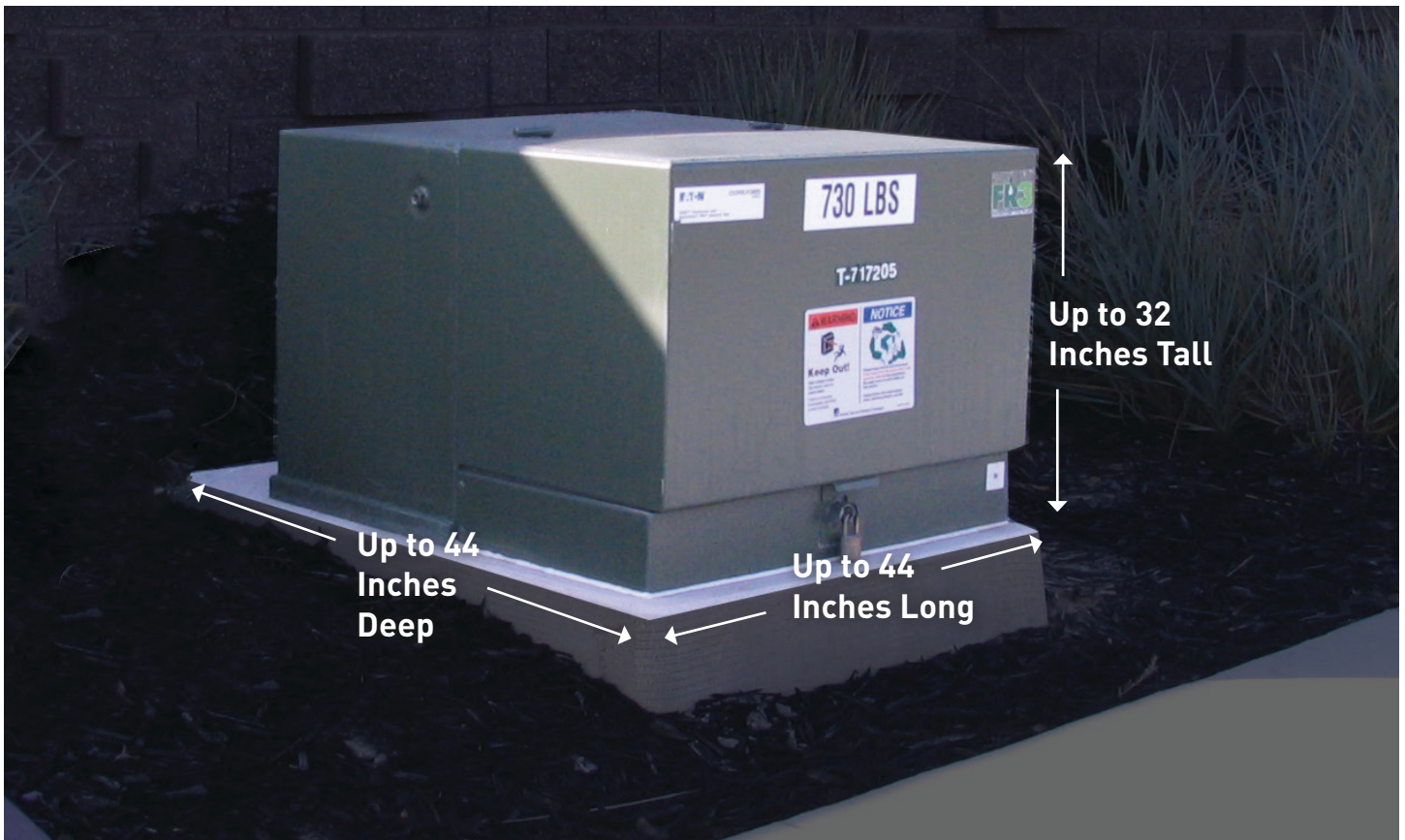


## Moving Powerlines Underground

We may need to dig a trench, bore or use other equipment to bury powerlines underground. Construction methods will vary depending on the project. We will notify you ahead of any surveying or construction work.

### KEY FACTS

- Trenches can vary from 8 inches to 30 inches wide.
- An easement may be required if the project crosses on to private property and will also serve an adjacent property. Equipment installed in public rights-of-way do not usually require an easement.
- PG&E's land acquisition team will coordinate with individual property owners if an easement is required.
- Easements can range from 3 feet to 30 feet wide, based on the trench location and size.
- We may also need to access the trench for future maintenance after the project is complete.



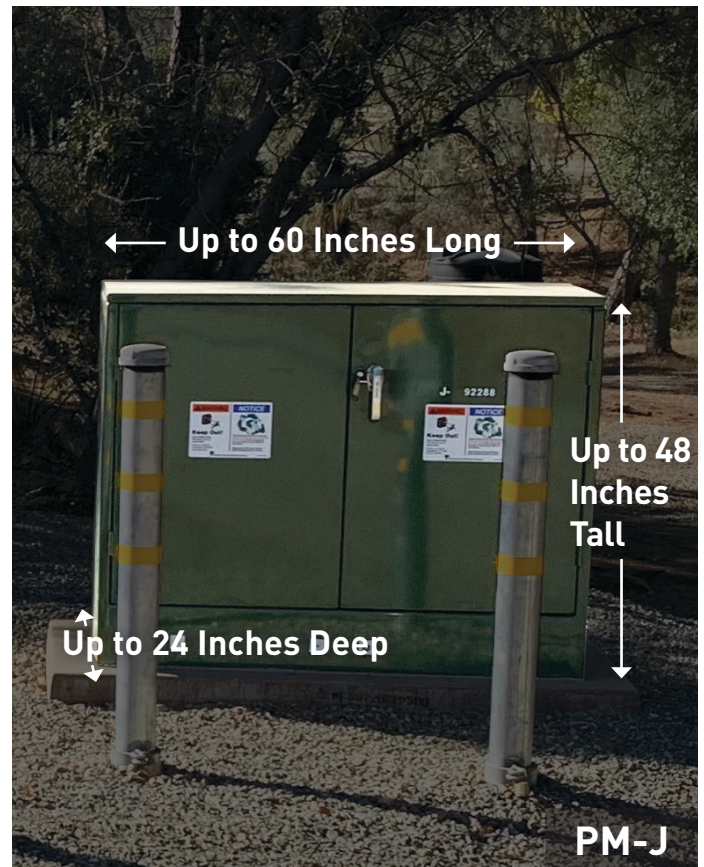
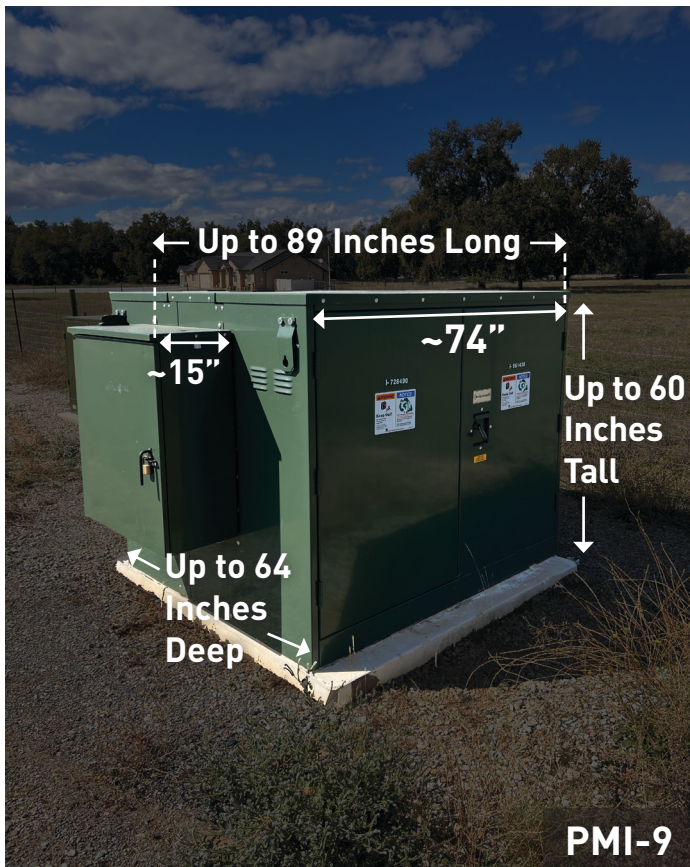
## Pad Mounted Transformers

Once a project is complete, some equipment may still need to remain above ground. This can include pad mounted transformers like the transformer pictured above. This equipment is not placed on all properties served by underground lines.

### KEY FACTS

- Pad mounted transformers may be up to 44 inches long, 44 inches deep and 32 inches tall.
- We may need an easement of up to 20 feet by 20 feet around the transformer.
- We need a workspace of at least 15 feet by 15 feet to safely install this equipment. This may include lane closures to help ensure the safety of crews and for traffic control.
- Vehicles must also be able to access the area around the transformer for future maintenance.
- Approved vegetation and other items must be kept at least 8 feet from the front and 2 feet from the sides of the pad at all times.





## Pad Mounted Transformer Switches

Once a project is complete, some equipment may still need to remain above ground. This can include pad mounted switches like the switches pictured above. This equipment is not placed on all properties served by underground lines.

### KEY FACTS

- Depending on the type, pad mounted switches may be up to 89 inches long, 64 inches deep and 60 inches tall.
- We may need an easement of up to 22 feet by 22 feet around the switch.
- We need a workspace of at least 15 feet by 15 feet to safely install this equipment. This may include lane closures to help ensure the safety of crews and for traffic control.
- Vehicles must also be able to access the area around the switch for future maintenance.
- Approved vegetation and other items must be kept at least 8 feet from the front and back and 5 feet from the sides of the pad at all times.





## Subsurface Junction/Enclosure Boxes

In some cases, we may need to install equipment for underground facilities in subsurface junction or enclosure boxes. We will need to access this in the future to maintain and conduct maintenance. This is not placed on all properties.

### KEY FACTS

- Box sizes vary and may be up to 9 feet long and 5 feet wide.
- We may need an easement of up to 20 feet by 20 feet around the box.
- We need a workspace of at least 15 feet by 15 feet to safely install this equipment. This may include lane closures to help ensure the safety of crews and for traffic control.
- Vehicles must also be able to access the area around the box for future maintenance.
- Approved vegetation and other items must be kept at least 5 feet from the front and back and 5 feet from the sides of the box at all times.





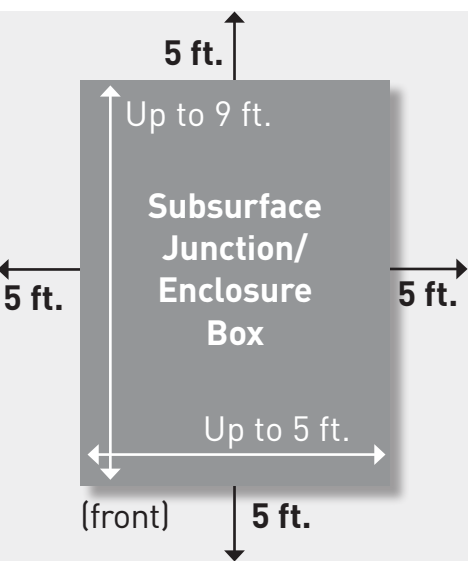
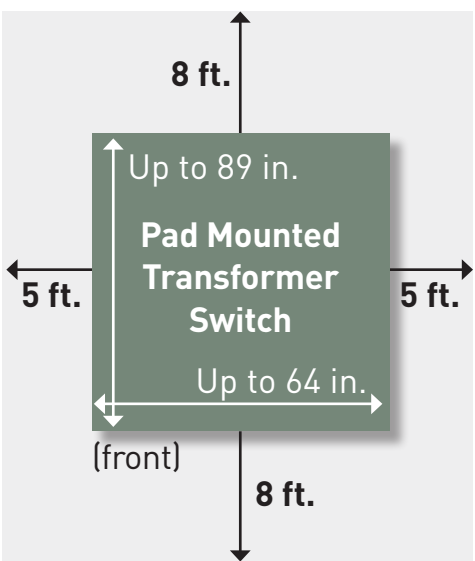
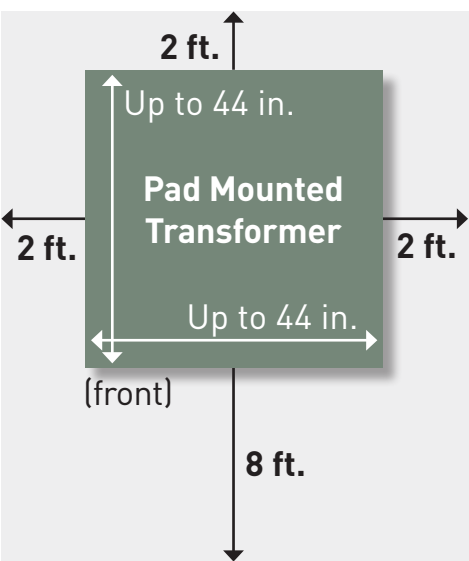
**Pad Mounted Transformer with Bollards**



**Pad Mounted Transformer Switch with Bollards**

# Safety Bollards

For safety, we may also need to install protection posts around aboveground transformers or switches. These short bollards are used to protect equipment near roadways. The use of bollards will vary based on the project location.



# Clear Zones

Clear zones around equipment are required for regular maintenance and ease of access during an emergency. It is important that vegetation and other items are kept outside of these areas and to always call 811 before you dig. 811 is a free service managed by Underground Service Alert that is available to everyone.







Thank you for your cooperation while we work to keep your community safe.

## Post Construction Restoration

After we finish moving powerlines underground and turning the power back on, our crews will clean up the area where we worked and leave it looking similar to how it did before construction. This may include repairing your roadway, driveway, yard or other outdoor spaces.

We will do our best to use comparable materials where possible. We will replace plants with comparable species as available at local nurseries. Size and maturity of plants may vary. Public roads will be restored to meet city or county design standards (including compaction ratings, repair styles, special local requirements, etc.). Private roads will be restored similarly and will also take into account other relevant local conditions.

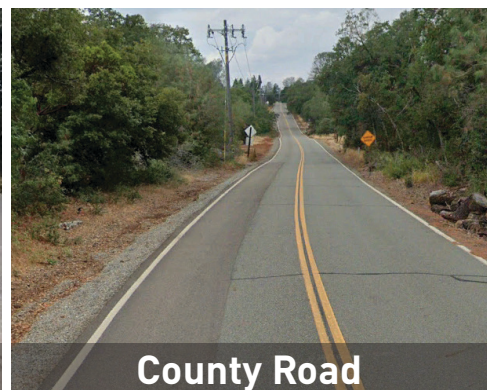
If work is paused for any reason during this process, you may see temporary fills on roads to keep drivers safe. We will keep you informed on any schedule updates.



Interim Restoration



Private Road



County Road

Final Restoration



**LEARN MORE**



[pge.com/undergrounding](https://pge.com/undergrounding)

## Questions?

To learn more, visit [pge.com/undergrounding](https://pge.com/undergrounding).

Call 1-877-265-1399 or email [wildfiresafety@pge.com](mailto:wildfiresafety@pge.com).