



UNDERGROUNDING

A Safer, Stronger and More Affordable Energy Future

FEBRUARY 2023

To better serve our customers and communities and reduce wildfire risk, PG&E is undergrounding 10,000 miles of powerlines.

What is undergrounding?

Undergrounding is the process of moving sections of overhead powerlines beneath the ground. This work will benefit our customers by:

- Helping prevent wildfires caused by equipment
- Reducing power outages and improving reliability
- Driving long-term affordability
- Decreasing the need for future tree work

Where will work take place?

We are focusing our undergrounding efforts in areas where we can have the greatest impact on reducing wildfire risk and wildfire safety outages.

↓ 99%

reduction in ignition risk at locations with lines undergrounded.

This makes it one of the most effective ways to reduce wildfire risk at the **lowest long-term cost to customers.**

350

miles planned for 2023

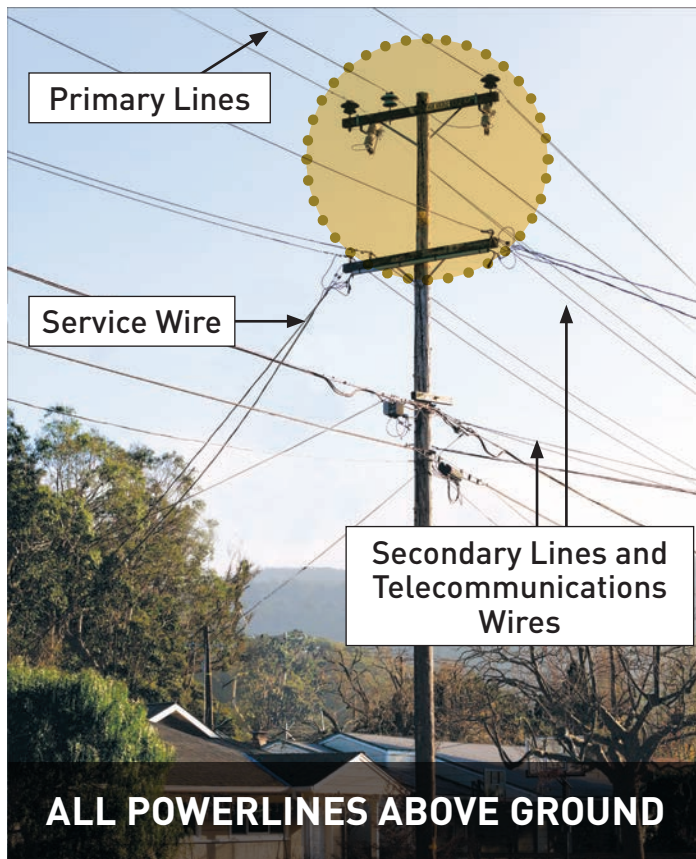
We are ramping up to underground hundreds of miles per year, to a total of approximately **2,300 miles undergrounded by 2026.**

Learn more at pge.com/undergrounding.

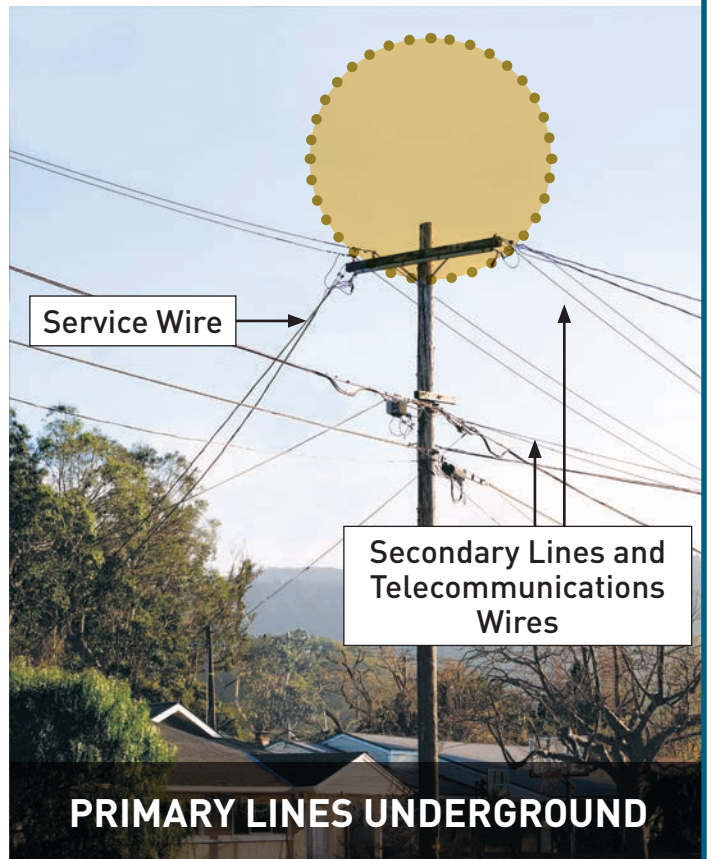
What can you expect?

We are moving powerlines that have the highest ignition risk underground. Customers will continue to see other equipment overhead. This includes telecommunication lines or powerlines connecting to individual homes or businesses. We will continue to explore opportunities for undergrounding other equipment or hardening above ground equipment to reduce wildfire risk. This may include undergrounding all lines for some projects.

BEFORE



AFTER



Working together

We will keep customers and communities informed about this work, which may include providing notifications before work begins and updates until it is completed.